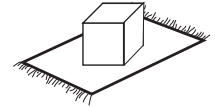


GENERAL NOTE: CAREFULLY REMOVE ALL WRAPPING MATERIALS AND ENSURE ALL PARTS ARE ACCOUNTED FOR. ASSEMBLE ON A CLEAN FLAT SURFACE TO AVOID SCRATCHES. DO NOT DISCARD THE PACKAGING UNTIL ITEM IS FULLY ASSEMBLED.

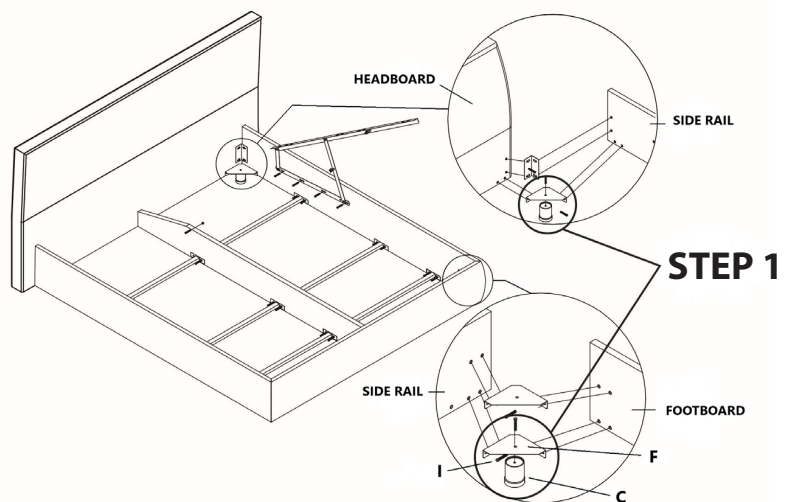
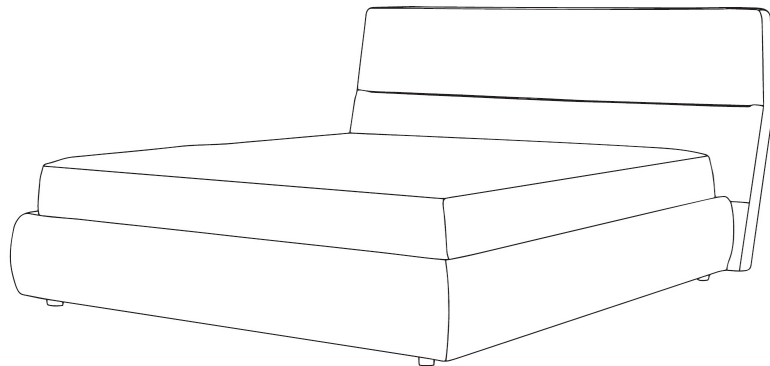


NOTES:

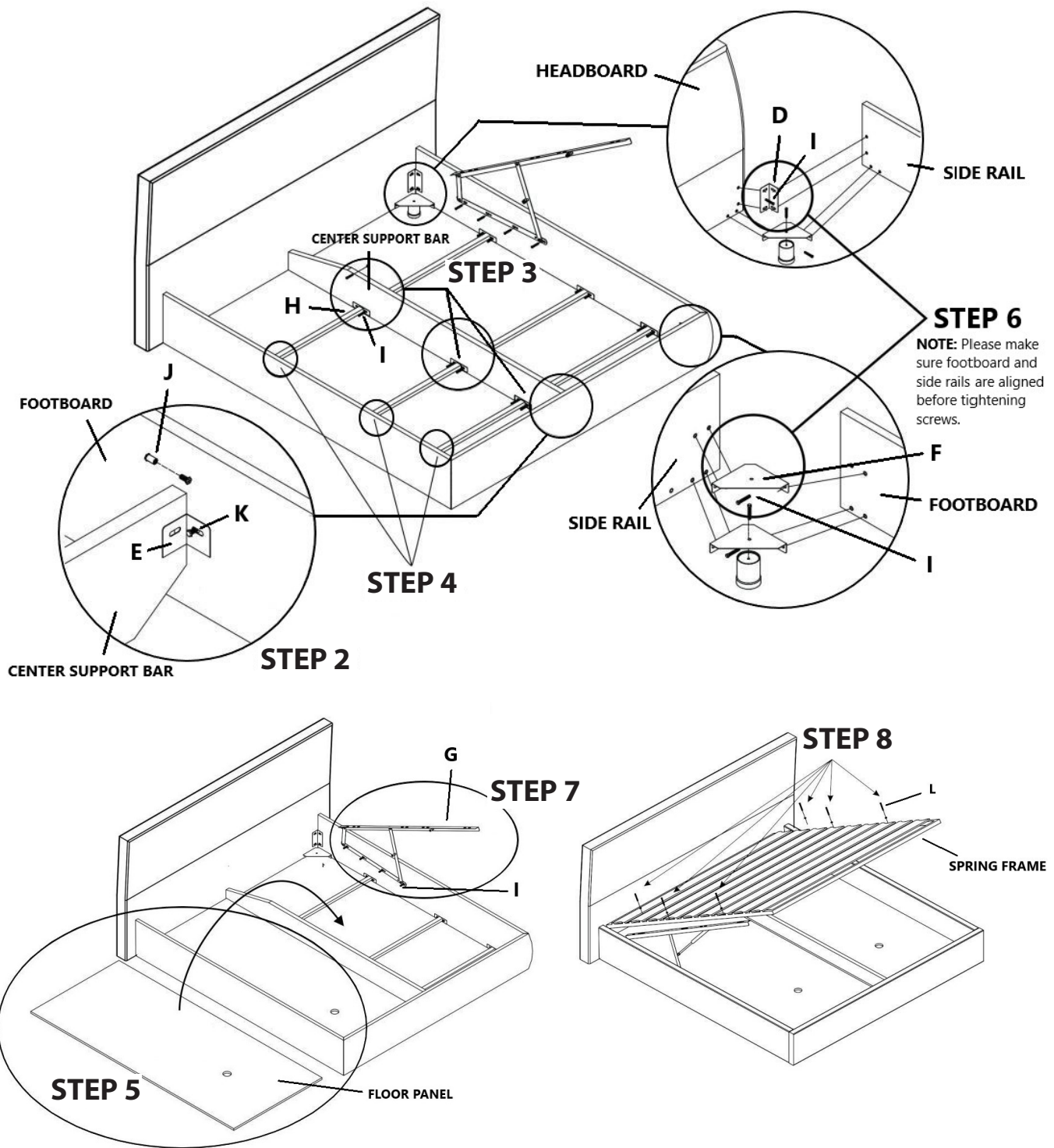
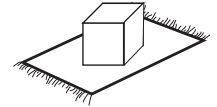
1. Check contents against list for quantity.
2. Familiarize yourself with the components and hardware by reviewing the Assembly Instructions.
3. Do not over tighten the screws and bolts as it may damage the threads.
4. Keep all hardware parts out of the reach of children.
5. Please "LIFT UP" the bed whenever you want to move it.
6. Do not pull down the spring frame without putting the mattress on first.

HARDWARE LIST		
NO.	DESCRIPTION	QTY
A	Headboard Leg (Pre-attached to headboard)	2 PCS
B	50mm screw (Pre-attached to headboard)	4 PCS
C	Frame Leg	4 PCS
D	A-45	2 PCS
E	B-45	1 PC
F	D-45 corner	6 PCS
G	Hydraulic	2 PCS
H	Cross bar	6 PCS
I	M8*30mm	56 PCS
J	Y8	1 PAIR
K	M8*20mm	1 PC
L	M8*40mm	6 PAIRS
M	Bed Drawstring	1 PC

COMPLETED ASSEMBLY



GENERAL NOTE: CAREFULLY REMOVE ALL WRAPPING MATERIALS AND ENSURE ALL PARTS ARE ACCOUNTED FOR. ASSEMBLE ON A CLEAN FLAT SURFACE TO AVOID SCRATCHES. DO NOT DISCARD THE PACKAGING UNTIL ITEM IS FULLY ASSEMBLED.



CAUTION: To avoid any damage on the hydraulics and bed, please do not pull down the spring frame without putting the mattress on first as the added weight will help alleviate the motion and mechanism on the hydraulics. Any damages caused by forcefully pulling down the spring frame by itself will void the warranty. Maximum weight capacity is 220 lbs.