

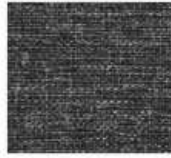
POLYTONE

visitor, conference & dining chairs

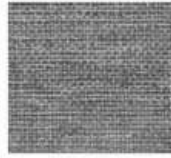
BERTA



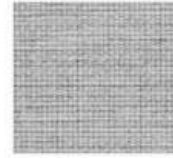
AD0 - Black



AD1 - Dark grey



AD2 - Grey



AD3 - Light grey



AD4 - Dark blue



AD5 - Brown



AD6 - Blue



AD7 - Mustard



AD8 - Light brown



AI5 - Red



AI8 - Green

INFORMATION

Composition

100% Polyester

Weight

302 g/m²

Abrasion resistance

100.000 Martindale cycles

Flammability

BS EN 1021 – 1 (cigarette)

BS EN 1021 – 2 (match)

Light fastness

6 (EN ISO 105 – B02)

(EN ISO 105 – A01)

Fastness to rubbing

5-4, dry: 5 (ISO 105 – X12)



ERA



C03 - Yellow



C06 - Red



C09 - Purple



C10 - Blue



C11 - Grey



C12 - Bright blue



C13 - Dark grey



C14 - Black



C15 - Dark blue



C16 - Light green



C17 - Dark pink



C18 - Green



C20 - Light blue

INFORMATION

Composition

100% Polyester

Weight

320 g/m²

Abrasion resistance

100.000 Martindale cycles

Flammability

BS EN 1021 – 1 (cigarette)

BS EN 1021 – 2 (match)

BS 7176 Low Hazard

Light fastness

5 (EN ISO 105 – B02)

Fastness to rubbing

wet: 4; dry: 4 (ISO 105 – X12)



BONDAI



GE1 - Black



GE2 - Light grey



GE3 - Orange



GE4 - Blue



GE5 - Purple



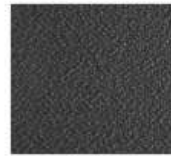
GE6 - Light blue



GE7 - Light brown



GE8 - Light green



GE9 - Grey



GF5 - Red



GF6 - Grey blue

INFORMATION

Composition

100% Polyester

Weight

250 g/m²

Abrasion resistance

150.000 Martindale cycles

Flammability

BS EN 1021 – 1 (cigarette)

BS EN 1021 – 2 (match)

Crib 5 (BS 5852 part II)

BS 7176 Medium Hazard

UNI 9175 & UNI 9175/FA1 Classe 1 IM

Light fastness

6 (EN ISO 105 – B02)

Fastness to rubbing

wet: 4; dry: 5 (ISO 105 – X12)



Leather look RNN



D11 - Black



D15 - Red



D16 - Ivory



D17 - Light brown



D18 - Brown



D19 - Dark brown

INFORMATION

Composition

21% PES, 31,5% COT, 47,5% PU

Weight

450 g/m²

Abrasion resistance

100.000 Martindale cycles

Light fastness

4-5 (EN ISO 105 – B02)

Fastness to rubbing

wet: 4; dry: 5 (ISO 105 – X12)

XTREME Plus



Y38 - Yellow



Y40 - Green



Y41 - Black



Y42 - Brown-grey



Y46 - Dark blue



Y47 - Orange



Y48 - Dark grey



Y49 - Burgundy



Y51 - Light blue



Y52 - Light grey



Y57 - Dark pink



Y58 - Grey



Y59 - Dark brown



Y65 - Bright red



Y84 - Turquoise



Y87 - Cappuccino



Y94 - Sky blue

INFORMATION

Composition

100% Recycled Polyester

Weight

310 g/m²

Abrasion resistance

100.000 Martindale cycles

Flammability

BS EN 1021 – 1 (cigarette)

BS EN 1021 – 2 (match)

BS 7176:2007 Low Hazard

Crib 5 (BS 5852 part II)

BS 7176:2007 Medium Hazard

DIN 4102 B1

NF-P-92-507 M1

UNI 8456 & UNI 9174 Class 1

Light fastness

6 (EN ISO 105 – B02)

Fastness to rubbing

wet: 4; dry: 4 (ISO 105 – X12)



STEP & STEP MELANGE



L01 - Black



L02 - Turquoise melange



L03 - Turquoise



L04 - Blue melange



L05 - Blue



L06 - Light blue melange



L07 - Light blue



L08 - Green melange



L09 - Green



L10 - Orange melange



L11 - Orange



L12 - Light grey melange



L13 - Grey



L14 - Grey-blue melange



L15 - Beige



L16 - Dark yellow melange



L17 - Dark yellow



L18 - Red melange



L19 - Red



L20 - Dark grey melange



INFORMATION

Composition

100% Trevira CS®

Flame Retardant Polyester

Weight

470 g/m²

Abrasion resistance

100.000 Martindale cycles

Flammability

BS EN 1021 – 1 (Cigarette)

BS EN 1021 – 2 (Match)

BS 5852 Part 1 0,1 Cigarette & match

Crib 5 (BS 5852 part II)

BS 7176 Medium Hazard

UNI 9175 & UNI 9175/FA1 Classe 1 IM

IMO MSC 307(88) Annex 1 part 8 MED

Certificate IMO

DIN 4102 B1

NFP 92-503/504/505 M1

ÖNORM B 3825-B1-3800-Q1 UK

FAR/JAR 25.853 (a) (i) (ii)

AM 18 – NF D 60-013 – (only for fabric)

CA TB 117-2013

DIN EN 13501-1 B-s1, d0

Light fastness

5-7 (EN ISO 105 – B02)

Fastness to rubbing

wet: 4-5; dry: 4-5 (ISO 105 – X12)



VELITO



GP1 - Light mint



GP3 - Yellow



GP5 - Dark pink melange



GT0 - Green melange



GT1 - Light blue



GT2 - Grey



GT3 - Light green melange



GT4 - Cappuccino



GT5 - Light red



GT6 - Mint



GT7 - Claret melange



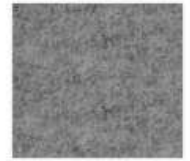
GT8 - Light grey melange



GT9 - Light blue melange



GU1 - Black



GU2 - Grey melange



GU3 - Mustard



GU4 - Beige



GU5 - Red melange



GU6 - Blue



GU8 - Brown melange



GU9 - Dark grey

INFORMATION

Composition

88% Wool, 12% Polyamide

Weight

400 g/ m²

Abrasion resistance

120.000 Martindale cycles

Flammability

BS EN 1021 – 1 (cigarette)

BS EN 1021 – 2 (match)

Light fastness

4 (EN ISO 105 – B02)

Fastness to rubbing

wet: 5; dry: 5 (ISO 105 – X12)



SYNERGY



S45 - Yellow melange



S46 - Light green melange



S53 - Green melange



S50 - Dark green melange



S17 - Black melange



S55 - Light mint colour



S56 - Mint colour melange



S59 - Dark teal melange



S62 - Midnight blue melange



S69 - Navy blue



S27 - Black



S84 - Red



S85 - Red melange



S68 - Royal blue melange



S63 - Blue



S16 - Grey melange



S08 - Light grey melange

INFORMATION

Composition

95% Virgin Wool, 5% Polyamide

Weight

400 g/m²

Abrasion resistance

100.000 Martindale cycles

Flammability

BS EN 1021 – 1 (cigarette)

BS EN 1021 – 2 (match)

BS 7176 Low Hazard

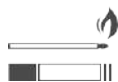
UNI 9175 Classe 1 IM

Light fastness

5 (EN ISO 105 – B02)

Fastness to rubbing

wet: 4; dry: 4 (ISO 105 – X12)



Genuine leather DNN



D81 - Black



D85 - Red



D86 - Ivory



D88 - Dark brown



D97 - Cappuccino

INFORMATION

Composition

Real leather

Thickness

0,9 – 1,1 mm

Flexing endurance

50.000 cycles

Light fastness

7 (EN ISO 105-B02)