

OPTIMA C, OPTIMA Plus desks



FEATURES

- Various types of desktop forms
- Three types of legs
- Supplementary units available

QUALITY STANDARD

- LST EN 527-1:2011
- LST EN 527-2:2003
- All desks meet the requirements of the LST EN 527-3:2003 standard.

TECHNICAL INFORMATION

OPTIMA C

Desktop

- 25 mm MFC (melamine) with 2 mm ABS edging.

Modesty panel

- 25 mm MFC (melamine) with 0,5 mm ABS edging.

Legs for tables

- Welded metal tube (base 50x25 mm);
- Powder coated metal;
- Plastic feet with height levelling (+10 mm);
- Desk height – 720 mm.

Legs for supplementary unit

- Metal tube Ø 50 mm;
- Powder coated metal;
- Plastic feet with height levelling (+10 mm);
- Desk height – 720 mm.

Fittings for assembly

- Cams with connecting bolts.

OPTIMA Plus

Desktop

- 25 mm MFC (melamine) with 2 mm ABS edging.

Modesty panel

- 25 mm MFC (melamine) with 0,5 mm ABS edging.

Legs

- 25 mm MFC (melamine) with 2 mm ABS edging;
- Plastic feet with height levelling (+10 mm);
- Desk height – 720 mm.

Fittings for assembly

- Cams with connecting bolts.

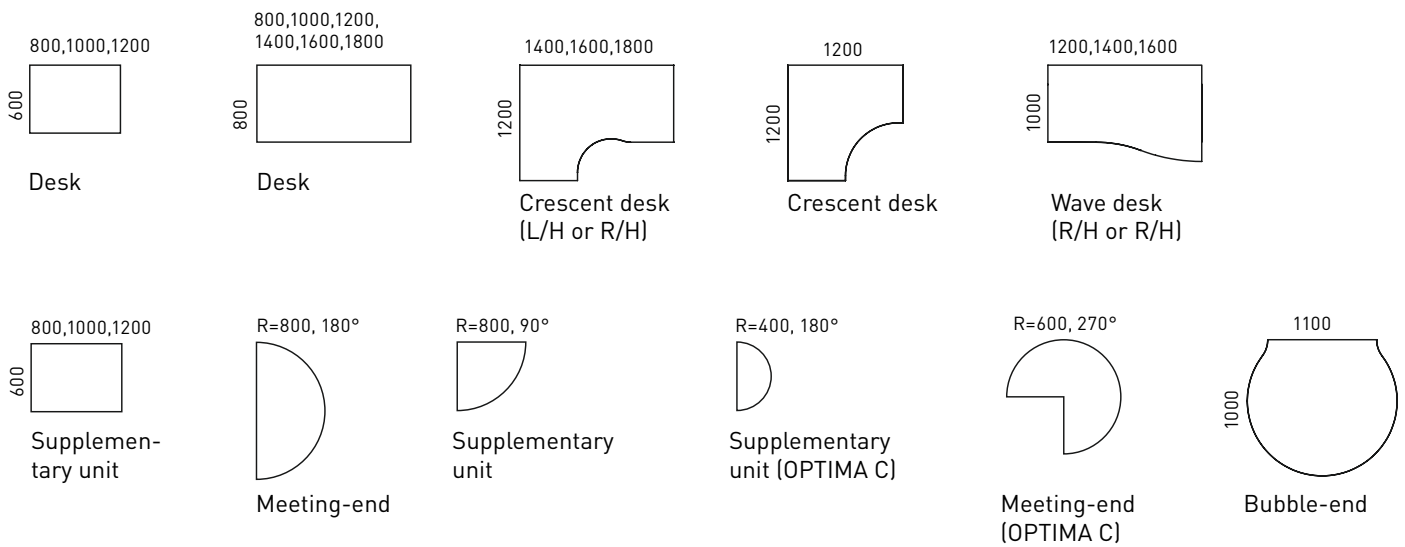
MATERIALS

- Melamine: P (birch), T (beech), D1 (whitened oak), D2 (amber oak), U (walnut), M1 (white), N (grey);
- Metal: E (white), M (metallic), A (black).

GUARANTEE

- 5 years

RANGE



ORDERING EXAMPLE

Code structure

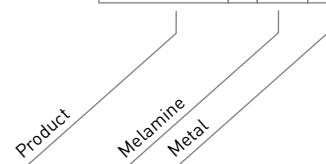


D1



M

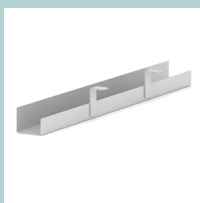
DCL161 - D1 M



Optional



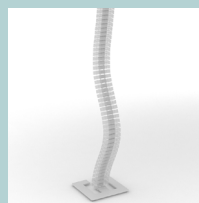
CPU holders



Cable trays



Cable clips



Cable ducts



Plastic leg inserts for cable management



Felt-lined metal drawers with lock