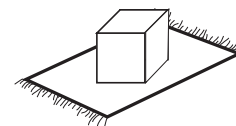


**GENERAL NOTE: CAREFULLY REMOVE ALL WRAPPING MATERIALS AND ENSURE ALL PARTS ARE ACCOUNTED FOR. ASSEMBLE ON A CLEAN FLAT SURFACE TO AVOID SCRATCHES. DO NOT DISCARD THE PACKAGING UNTIL ITEM IS FULLY ASSEMBLED.**

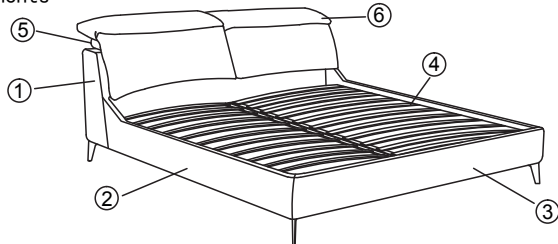


**\*Tip for attaching fabric cover** - Peel away the velcro cover as you make your way across from the top, then pulling firmly at the bottom and attaching in the same way. Start at the outside corners and make your way to the headboard so there is enough extra leeway to have the rail tuck into the headboard.

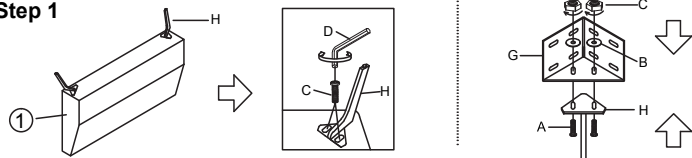
## Hardware accessories

A x 44pcs	.....		Ø8*30mm
B x 44pcs	.....		Ø10*1mm
C x 4pcs	.....		Ø8*6mm
D x 1pcs	.....		Ø8*70mm
E x 2pcs	.....		
F x 2pcs	.....		
G x 2pcs	.....		
H x 4pcs	.....		

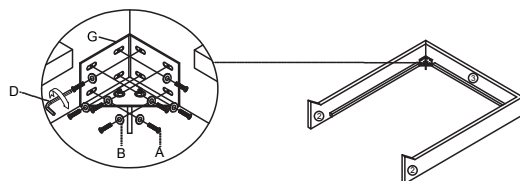
## Bed components



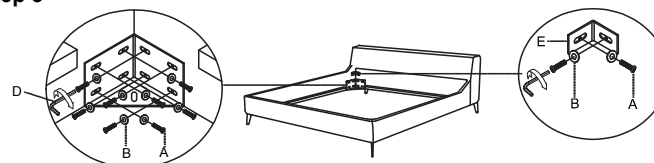
### Step 1



### Step 2

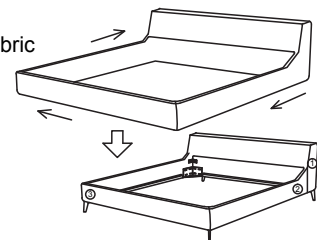


### Step 3

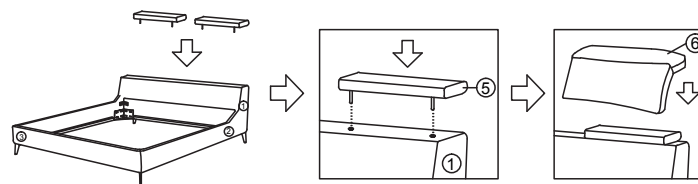


### Step 4

**NOTE:** Please make sure that the fabric cover is in its correct position before removing the Velcro strip cover.



### Step 5



### Step 6

