

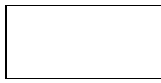
TECHNICAL SPECIFICATION

COLOURS

BODY, FRONT, COUNTER TOP



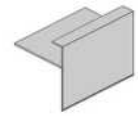
31 CANADIAN OAK



67 WHITE PASTEL



106 LOWLAND NUT



HPL ELEMENTS STRUCTURE



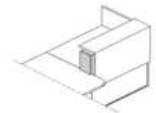
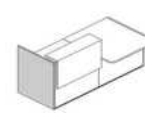
31 CANADIAN OAK



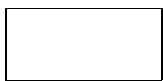
67 WHITE PASTEL



106 LOWLAND NUT



CORNER UNIT



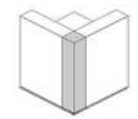
73 HIGH GLOSS WHITE



101 HIGH GLOSS BLACK



155 ANTHRACITE HIGH GLOSS



OPTIONAL TOP ELEMENT WITH LIGHT



73 HIGH GLOSS WHITE



WHITE, LACOBEL



101 HIGH GLOSS BLACK



BLACK, LACOBEL



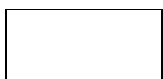
155 ANTHRACITE HIGH GLOSS



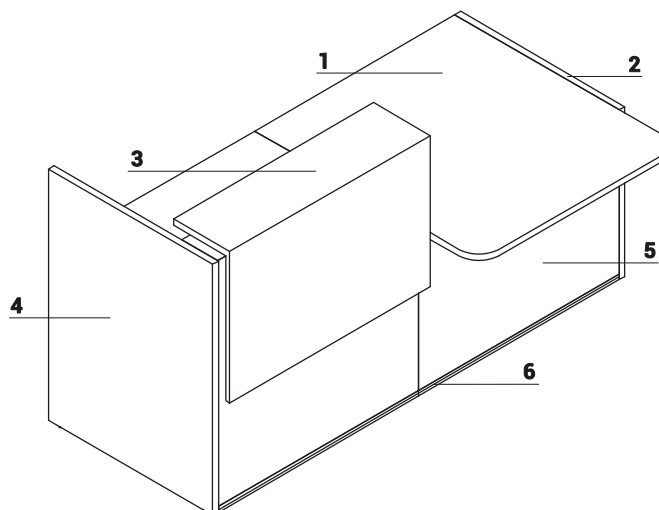
ANTHRACITE, LACOBEL



SUPPORTING LEG WHERE WORKTOPS CONNECT NL41

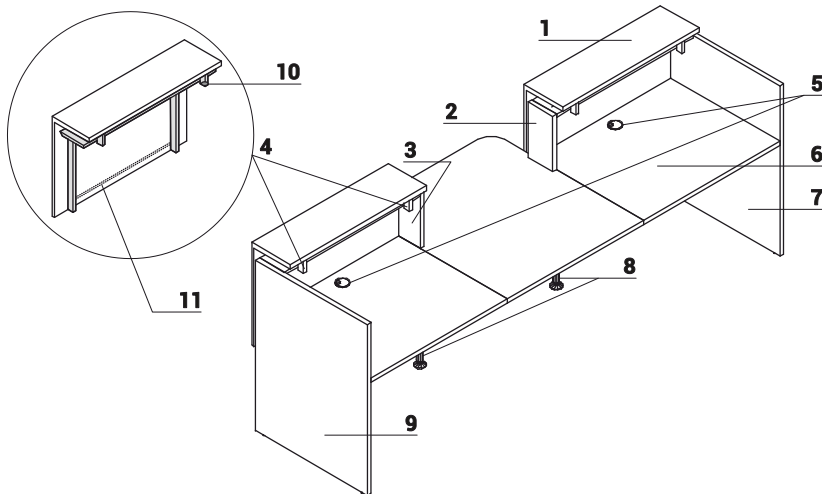


M015 WHITE SEMI-MATTE

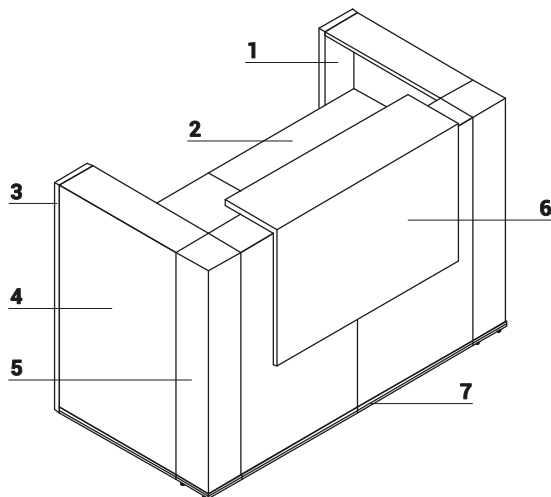


1. **Worktop** - MFC 1 1/8" | 28mm, PVC edge
2. **Low side panel** - MFC 1 1/8" | 28mm, PVC edge
3. **Optional top element with lightening** - top melamine board 1 1/8" | 28mm, front melamine board 6/8" | 18mm, all in HPL - gloss
4. **High side panel** - MFC 1 1/8" | 28mm, PVC edge
5. **Front** - MFC 6/8" | 18mm, PVC edge
6. **Decorative stripe** - PVC, colour: M009 - aluminum semi-matte

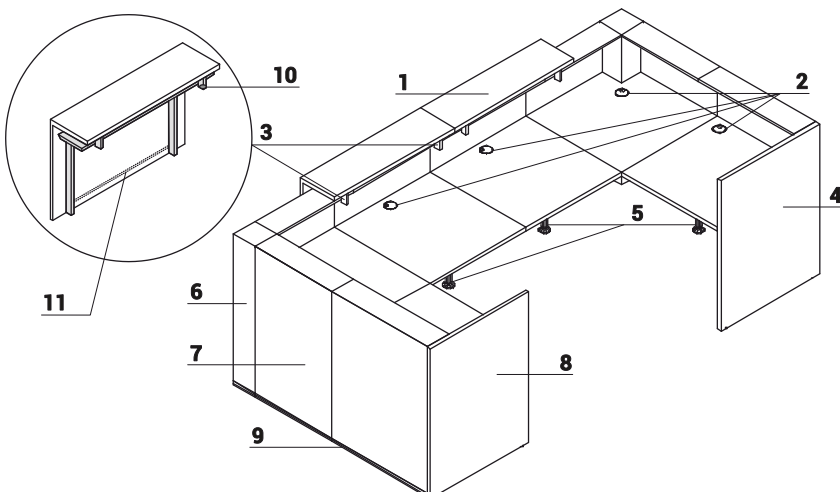
TECHNICAL SPECIFICATION



1. **Optional top element with lightening** - top melamine board 1 1/8" | 28mm, front melamine board 6/8" | 18mm, all in HPL - gloss
2. **Side panel linking low and heigh fronts** - MFC 1 1/8" | 28mm, PVC edge
3. **Side panel linking low and heigh fronts** - MFC 1 1/8" | 28mm, PVC edge
4. **Frame to optional top element with lightening** - metal powder-coated, white colour
5. **Cable grommets** - O3 1/8" | O80mm
6. **Worktop** - MFC 1 1/8" | 28mm, PVC edge
7. **High side panel** - MFC 1 1/8" | 28mm, PVC edge
8. **Supporting leg NE41**- required for connecting the tops
9. **High side panel** - MFC 1 1/8" | 28mm, PVC edge
10. Light switch
11. LED lighting – over the entire length of the extension, cold white (bluish kind of white)

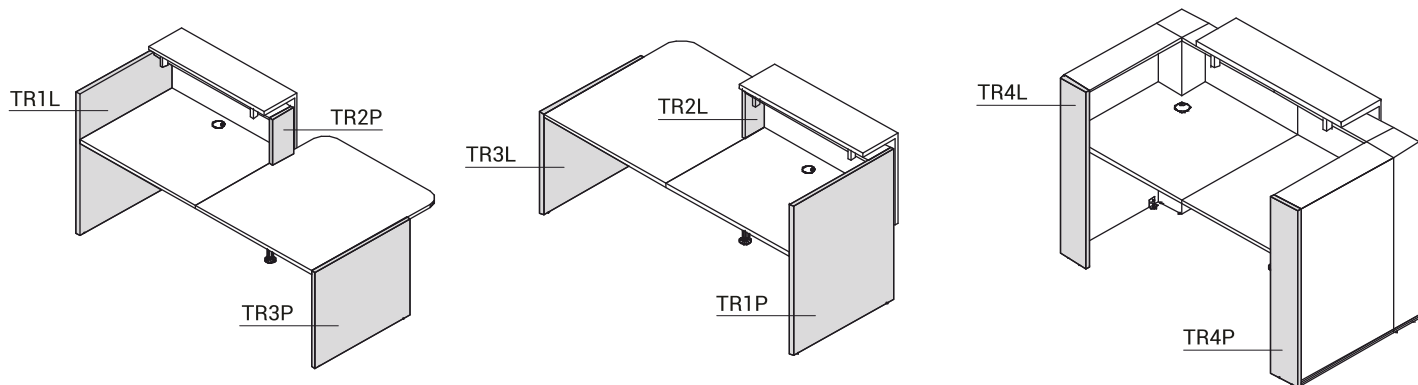


1. **High side panel** - MFC 1 1/8" | 28mm, PVC edge
2. **Worktop** - MFC 1 1/8" | 28mm, PVC edge
3. **High side panel** - MFC 1 1/8" | 28mm, PVC edge
4. **Front** - MFC 6/8" | 18mm, PVC edge
5. **Corner unit** - melamine board covered with HPL - gloss
6. **Optional top element with lightening** - top melamine board 1 1/8" | 28mm, front melamine board 6/8" | 18mm, all in HPL - gloss
7. **Decorative stripe** - PVC, colour: M009 - aluminum semi-matte

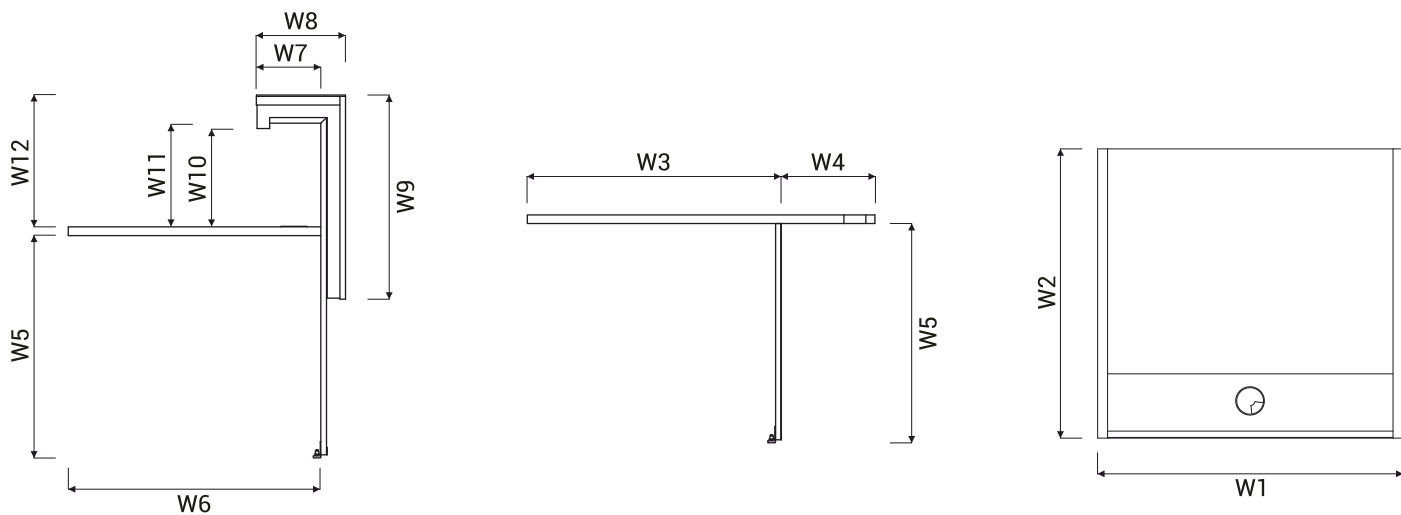


1. **Optional top element with lightening** - top melamine board 1 1/8" | 28mm, front melamine board 6/8" | 18mm, all in HPL - gloss
2. **Cable grommets** - O3 1/8" | O80mm
3. **Frame to optional top element with lightening** - metal powder-coated, white colour
4. **High side panel** - MFC 1 1/8" | 28mm, PVC edge
5. **Supporting leg NE41**- required for connecting the tops
6. **Corner unit** - melamine board covered with HPL - gloss
7. **Front** - MFC 6/8" | 18mm, PVC edge
8. **High side panel** - MFC 1 1/8" | 28mm, PVC edge
9. **Decorative stripe** - PVC, colour: M009 - aluminum semi-matte
10. Light switch
11. LED lighting – over the entire length of the extension, cold white (bluish kind of white)

TECHNICAL SPECIFICATION

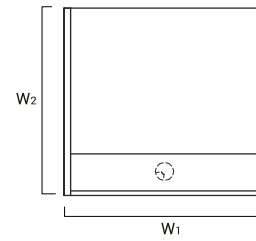
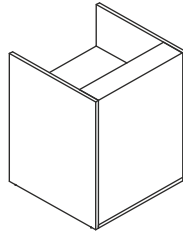


DIMENSIONS

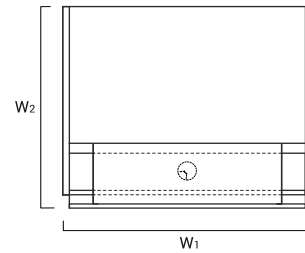
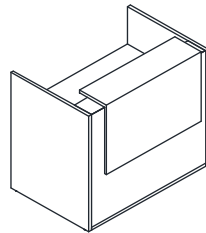


W1 - 33 6/8" 856mm | W2 - 32 2/8" 820mm | W3 - 32 2/8" 818mm | W4 - 11 7/8" 302mm | W5 - 29 1/8" 740mm | W6 - 31 4/8" 800mm | W7 - 8 1/8" 205mm | W8 - 11 1/8" 282mm | W9 - 25 5/8" 650mm | W10 - 12 3/8" 315mm | W11 - 12 5/8" 322mm | W12 - 16 7/8" 419mm

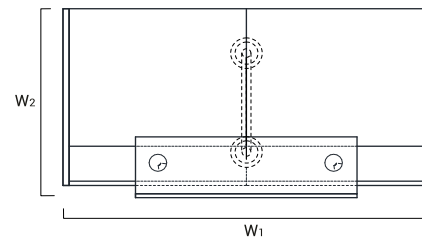
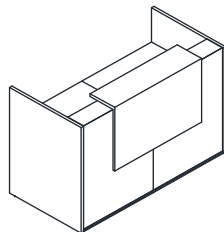
RECEPTION DESKS SYSTEMS



INDEX SYMBOL	DIMENSIONS					[mm]/[inch]	⚖️	📦	📦		COMPONENTS
	W ₁	W ₂	D ₁	D ₂	H						
TRA13	856 33 3/4"	820 32 1/4"	-	-	1090 42 7/8"		59.0	0.124	3		TR1L+TR08+TR1P



INDEX SYMBOL	DIMENSIONS					[mm]/[inch]	⚖️	📦	📦		COMPONENTS
	W ₁	W ₂	D ₁	D ₂	H						
TRA14	1056 41 5/8"	877 34 1/2"	-	-	1159 45 5/8"		83.0	0.320	4		TR1L+TR10+TR99+TR1P
TRA15	1256 49 1/2"	877 34 1/2"	-	-	1159 45 5/8"		87.0	0.332	4		TR1L+TR12+TR99+TR1P
TRA16	1456 57 3/8"	877 34 1/2"	-	-	1159 45 5/8"		89.0	0.344	4		TR1L+TR14+TR99+TR1P



INDEX SYMBOL	DIMENSIONS					[mm]/[inch]	⚖️	📦	📦		COMPONENTS
	W ₁	W ₂	D ₁	D ₂	H						
TRA17	1656 65 1/4"	877 34 1/2"	-	-	1159 45 5/8"		103.0	0.425	6		TR1L+2xTR08+TR99+TR1P+NL41
TRA18	2056 81"	877 34 1/2"	-	-	1159 45 5/8"		117.0	0.449	6		TR1L+2xTR10+TR99+TR1P+NL41
TRA19	2456 96 3/4"	877 34 1/2"	-	-	1159 45 5/8"		125.0	0.473	6		TR1L+2xTR12+TR99+TR1P+NL41
TRA20	2856 112 1/2"	877 34 1/2"	-	-	1159 45 5/8"		129.0	0.498	6		TR1L+2xTR14+TR99+TR1P+NL41

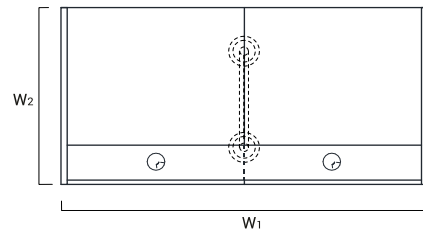
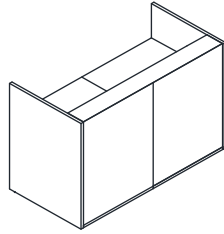
DESCRIPTION

⚖️ - NET WEIGHT

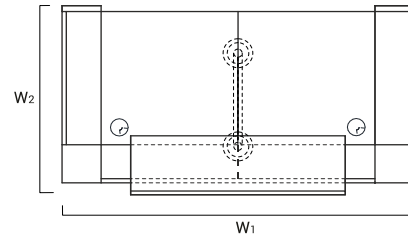
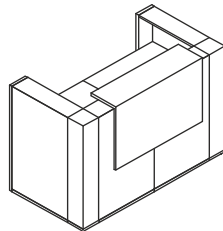
📦 VOLUME

📦 NUMBER OF PACKAGES

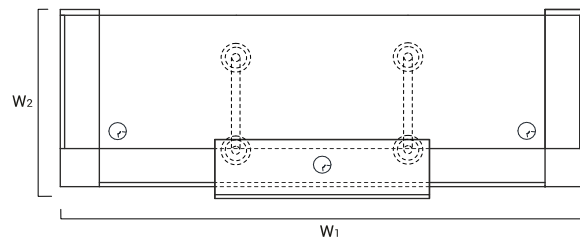
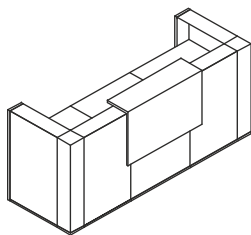
RECEPTION DESKS SYSTEMS



INDEX SYMBOL	DIMENSIONS					[mm]/[inch]	⚖️	📦	📦		COMPONENTS
	W ₁	W ₂	D ₁	D ₂	H						
TRA117	1656 65 1/4"	820 32 1/4"	-	-	1090 42 7/8"		86.0	0.242	5		TR1L+2xTR08+TR1P+NL41
TRA118	2056 81"	820 32 1/4"	-	-	1090 42 7/8"		100.0	0.266	5		TR1L+2xTR10+TR1P+NL41
TRA119	2456 96 3/4"	820 32 1/4"	-	-	1090 42 7/8"		108.0	0.290	5		TR1L+2xTR12+TR1P+NL41
TRA120	2856 112 1/2"	820 32 1/4"	-	-	1090 42 7/8"		112.0	0.314	5		TR1L+2xTR14+TR1P+NL41



INDEX SYMBOL	DIMENSIONS					[mm]/[inch]	⚖️	📦	📦		COMPONENTS
	W ₁	W ₂	D ₁	D ₂	H						
TRA42	1640 64 5/8"	905 35 5/8"	-	-	1159 45 5/8"		99.0	0.460	8		TR4L+2xTR90+TR4P+TR99+NL41



INDEX SYMBOL	DIMENSIONS					[mm]/[inch]	⚖️	📦	📦		COMPONENTS
	W ₁	W ₂	D ₁	D ₂	H						
TRA21	2440 96 1/8"	905 35 5/8"	-	-	1159 45 5/8"		126.0	0.577	10		TR4L+2xTR90+TR08+TR4P+TR99+2xNL41
TRA22	2640 103 7/8"	905 35 5/8"	-	-	1159 45 5/8"		133.0	0.590	10		TR4L+2xTR90+TR10+TR4P+TR99+2xNL41
TRA23	2840 111 3/4"	905 35 5/8"	-	-	1159 45 5/8"		137.0	0.602	10		TR4L+2xTR90+TR12+TR4P+TR99+2xNL41
TRA24	3040 119 5/8"	905 35 5/8"	-	-	1159 45 5/8"		139.0	0.614	10		TR4L+2xTR90+TR14+TR4P+TR99+2xNL41

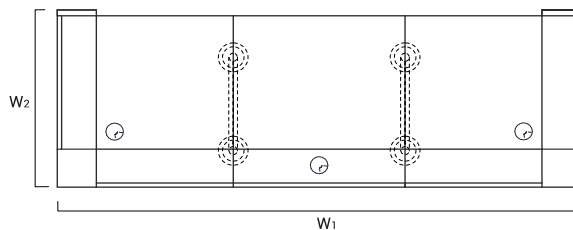
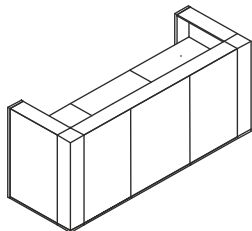
DESCRIPTION

⚖️ - NET WEIGHT

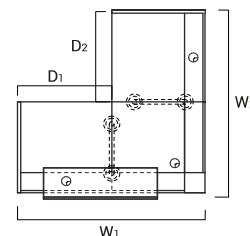
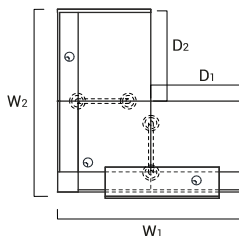
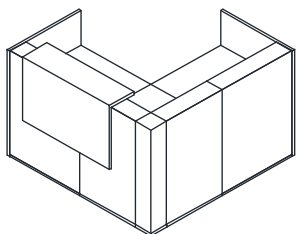
📦 VOLUME

📦 NUMBER OF PACKAGES

RECEPTION DESKS SYSTEMS



INDEX SYMBOL	DIMENSIONS					[mm]/[inch]	⚖️	📦	📦		COMPONENTS
	W ₁	W ₂	D ₁	D ₂	H						
TRA121	2440 96 1/8"	848 33 3/8"	-	-	1090 42 7/8"		109.0	0.394	9		TR4L+2xTR90+TR08+TR4P +2xNL41
TRA122	2640 103 7/8"	848 33 3/8"	-	-	1090 42 7/8"		116.0	0.406	9		TR4L+2xTR90+TR10+TR4P +2xNL41
TRA123	2840 111 3/4"	848 33 3/8"	-	-	1090 42 7/8"		120.0	0.418	9		TR4L+2xTR90+TR12+TR4P +2xNL41
TRA124	3040 119 5/8"	848 33 3/8"	-	-	1090 42 7/8"		122.0	0.430	9		TR4L+2xTR90+TR14+TR4P +2xNL41



INDEX SYMBOL	DIMENSIONS					[mm]/[inch]	⚖️	📦	📦		COMPONENTS
	W ₁	W ₂	D ₁	D ₂	H						
TRA25	1648 64 7/8"	1705 67 1/8"	-	-	1159 45 5/8"		141.0	0.586	9		TR1L+TR08+TR90+TR08+TR1P +TR99+2xNL41
TRA26	1848 72 3/4"	1705 67 1/8"	-	-	1159 45 5/8"		148.0	0.598	9		TR1L+TR08+TR90+TR10+TR1P +TR99+2xNL41
TRA27	2048 80 5/8"	1705 67 1/8"	-	-	1159 45 5/8"		152.0	0.611	9		TR1L+TR08+TR90+TR12+TR1P +TR99+2xNL41
TRA28	2248 88 1/2"	1705 67 1/8"	-	-	1159 45 5/8"		154.0	0.623	9		TR1L+TR08+TR90+TR14+TR1P +TR99+2xNL41

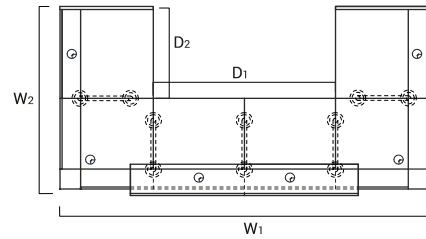
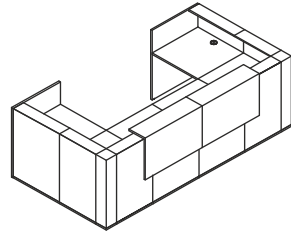
DESCRIPTION

⚖️ - NET WEIGHT

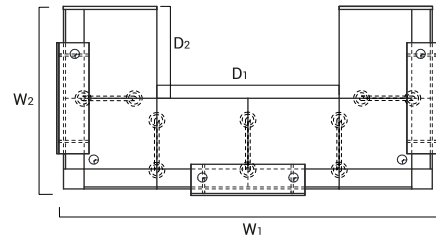
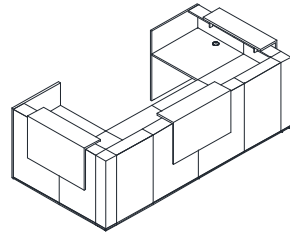
📦 VOLUME

📦 NUMBER OF PACKAGES

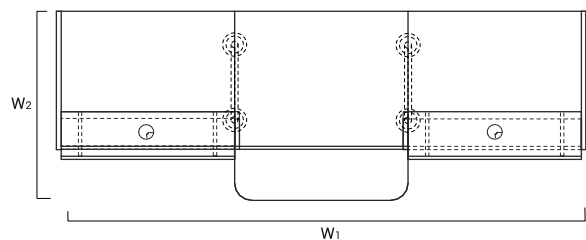
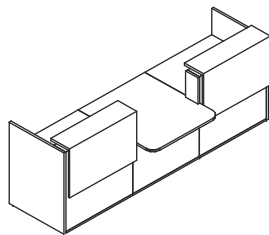
RECEPTION DESKS SYSTEMS



INDEX SYMBOL	DIMENSIONS					[mm]/[inch]	⚖️	📦	📦	COMPONENTS
	W ₁	W ₂	D ₁	D ₂	H					
TRA29	3240 127 1/2"	1705 67 1/8"	-	-	1159 45 5/8"		250.0	1.166	17	TR1L+2xTR08+2xTR90+2xTR08 +TR1P+2xTR99+5xNL41
TRA30	3640 143 1/4"	1705 67 1/8"	-	-	1159 45 5/8"		264.0	1.190	17	TR1L+2xTR08+2xTR90+2xTR10 +TR1P+2xTR99+5xNL41
TRA31	4040 159"	1705 67 1/8"	-	-	1159 45 5/8"		272.0	1.214	17	TR1L+2xTR08+2xTR90+2xTR12 +TR1P+2xTR99+5xNL41
TRA32	4440 174 3/4"	1705 67 1/8"	-	-	1159 45 5/8"		276.0	1.239	17	TR1L+2xTR08+2xTR90+2xTR14 +TR1P+2xTR99+5xNL41



INDEX SYMBOL	DIMENSIONS					[mm]/[inch]	⚖️	📦	📦	COMPONENTS
	W ₁	W ₂	D ₁	D ₂	H					
TRA129	3354 132"	1705 67 1/8"	-	-	1159 45 5/8"		267.0	1.349	18	TR1L+2xTR08+2xTR90+2xTR08 +TR1P+3xTR99+5xNL41
TRA130	3754 147 3/4"	1705 67 1/8"	-	-	1159 45 5/8"		281.0	1.374	18	TR1L+2xTR08+2xTR90+2xTR10 +TR1P+3xTR99+5xNL41
TRA131	4154 163 1/2"	1705 67 1/8"	-	-	1159 45 5/8"		289.0	1.398	18	TR1L+2xTR08+2xTR90+2xTR12 +TR1P+3xTR99+5xNL41
TRA132	4554 179 1/4"	1705 67 1/8"	-	-	1159 45 5/8"		293.0	1.422	18	TR1L+2xTR08+2xTR90+2xTR14 +TR1P+3xTR99+5xNL41



INDEX SYMBOL	DIMENSIONS					[mm]/[inch]	⚖️	📦	📦	COMPONENTS
	W ₁	W ₂	D ₁	D ₂	H					
TRA33	3056 120 3/8"	1120 44 1/8"	-	-	1159 45 5/8"		169.0	0.793	11	TR1L+TR10+TR2P+TR11+TR2L +TR10+TR1P+2xTR99+2xNL41
TRA34	3456 136 1/8"	1120 44 1/8"	-	-	1159 45 5/8"		177.0	0.817	11	TR1L+TR12+TR2P+TR11+TR2L +TR12+TR1P+2xTR99+2xNL41
TRA35	3856 151 3/4"	1120 44 1/8"	-	-	1159 45 5/8"		181.0	0.841	11	TR1L+TR14+TR2P+TR11+TR2L +TR14+TR1P+2xTR99+2xNL41

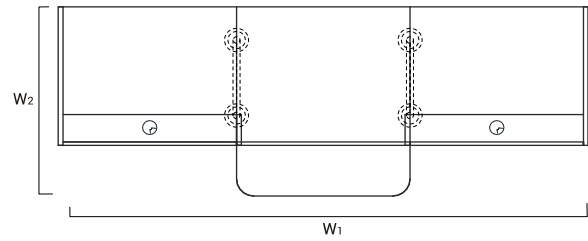
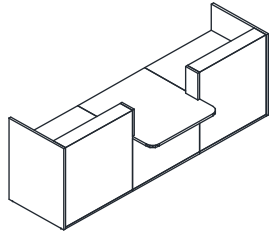
DESCRIPTION

⚖️ - NET WEIGHT

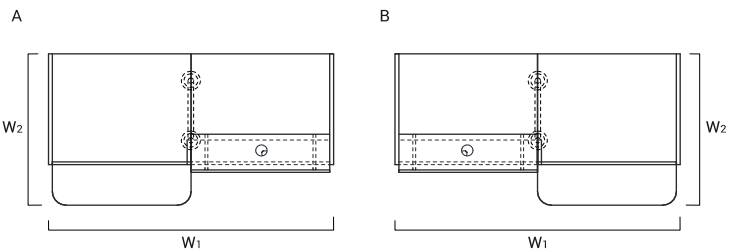
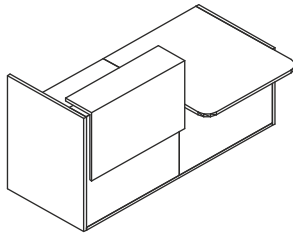
📦 VOLUME

📦 NUMBER OF PACKAGES

RECEPTION DESKS SYSTEMS



INDEX SYMBOL	DIMENSIONS					[mm]/[inch]	⚖️	📦	📦		COMPONENTS
	W ₁	W ₂	D ₁	D ₂	H						
TRA133	3056 120 3/8"	1120 44 1/8"	-	-	1090 42 7/8"		135.0	0.426	9		TR12+TR10+TR2P+TR11+TR2L +TR10+TR1P+2xNL41
TRA134	3456 136 1/8"	1120 44 1/8"	-	-	1090 42 7/8"		143.0	0.451	9		TR12+TR12+TR2P+TR11+TR2L +TR12+TR1P+2xNL41
TRA135	3856 151 3/4"	1120 44 1/8"	-	-	1090 42 7/8"		147.0	0.475	9		TR12+TR14+TR2P+TR11+TR2L +TR14+TR1P+2xNL41



INDEX SYMBOL	DIMENSIONS					[mm]/[inch]	⚖️	📦	📦		COMPONENTS
	W ₁	W ₂	D ₁	D ₂	H						
A TRA36L	2056 81"	1120 44 1/8"	-	-	1159 45 5/8"		111.5	0.467	7		TR1L+TR10+TR2P+TR11+TR3P +TR99+NL41
B TRA36P	2056 81"	1120 44 1/8"	-	-	1159 45 5/8"		111.5	0.467	7		TR3L+TR11+TR2L+TR10+TR1P +TR99+NL41
A TRA37L	2256 88 7/8"	1120 44 1/8"	-	-	1159 45 5/8"		115.5	0.479	7		TR1L+TR12+TR2P+TR11+TR3P +TR99+NL41
B TRA37P	2256 88 7/8"	1120 44 1/8"	-	-	1159 45 5/8"		115.5	0.479	7		TR3L+TR11+TR2L+TR12+TR1P +TR99+NL41
A TRA38L	2456 96 3/4"	1120 44 1/8"	-	-	1159 45 5/8"		117.5	0.491	7		TR1L+TR14+TR2P+TR11+TR3P +TR99+NL41
B TRA38P	2456 96 3/4"	1120 44 1/8"	-	-	1159 45 5/8"		117.5	0.492	7		TR3L+TR11+TR2L+TR14+TR1P +TR99+NL41

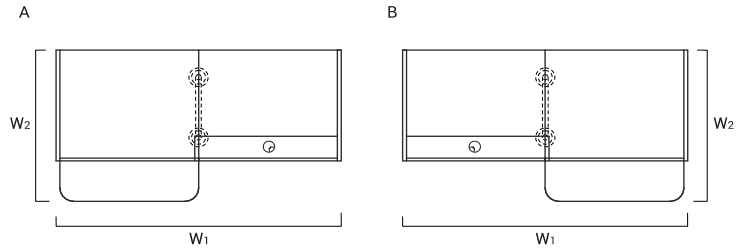
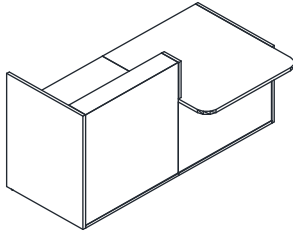
DESCRIPTION

⚖️ - NET WEIGHT

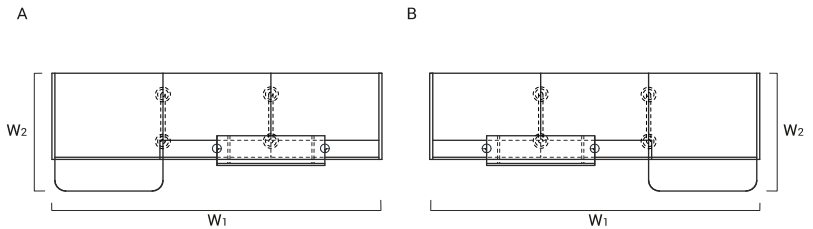
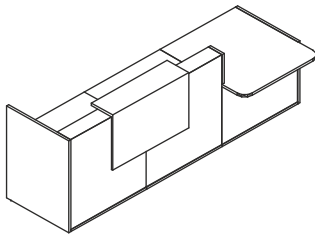
📦 VOLUME

📦 NUMBER OF PACKAGES

RECEPTION DESKS SYSTEMS



INDEX SYMBOL	DIMENSIONS [mm]/[inch]						⚖️ kg	📦 m3	📦 pcs		COMPONENTS
	W ₁	W ₂	D ₁	D ₂	H						
A TRA136L	2056 81"	1120 44 1/8"	-	-	1090 42 7/8"		94.5	0.283	6		TR1L+TR10+TR2P+TR11+TR3P+NL41
B TRA136P	2056 81"	1120 44 1/8"	-	-	1090 42 7/8"		94.5	0.284	6		TR3L+TR11+TR2L+TR10+TR1P+NL41
A TRA137L	2256 88 7/8"	1120 44 1/8"	-	-	1090 42 7/8"		98.5	0.295	6		TR1L+TR12+TR2P+TR11+TR3P+NL41
B TRA137P	2256 88 7/8"	1120 44 1/8"	-	-	1090 42 7/8"		98.5	0.296	6		TR3L+TR11+TR2L+TR12+TR1P+NL41
A TRA138L	2456 96 3/4"	1120 44 1/8"	-	-	1090 42 7/8"		100.5	0.308	6		TR1L+TR14+TR2P+TR11+TR3P+NL41
B TRA138P	2456 96 3/4"	1120 44 1/8"	-	-	1090 42 7/8"		100.5	0.308	6		TR3L+TR11+TR2L+TR14+TR1P+NL41






INDEX SYMBOL	DIMENSIONS [mm]/[inch]						⚖️ kg	📦 m3	📦 pcs		COMPONENTS
	W ₁	W ₂	D ₁	D ₂	H						
A TRA39L	3056 120 3/8"	1120 44 1/8"	-	-	1159 45 5/8"		145.5	0.596	9		TR1L+2xTR10+TR2P+TR11+TR3P+TR99+2xNL41
B TRA39P	3056 120 3/8"	1120 44 1/8"	-	-	1159 45 5/8"		145.5	0.597	9		TR3L+TR11+TR2L+2xTR10+TR1P+TR99+2xNL41
A TRA40L	3456 136 1/8"	1120 44 1/8"	-	-	1159 45 5/8"		153.5	0.620	9		TR1L+2xTR12+TR2P+TR11+TR3P+TR99+2xNL41
B TRA40P	3456 136 1/8"	1120 44 1/8"	-	-	1159 45 5/8"		153.5	0.621	9		TR3L+TR11+TR2L+2xTR12+TR1P+TR99+2xNL41
A TRA41L	3856 151 3/4"	1120 44 1/8"	-	-	1159 45 5/8"		157.5	0.645	9		TR1L+2xTR14+TR2P+TR11+TR3P+TR99+2xNL41
B TRA41P	3856 151 3/4"	1120 44 1/8"	-	-	1159 45 5/8"		157.5	0.645	9		TR3L+TR11+TR2L+2xTR14+TR1P+TR99+2xNL41

DESCRIPTION






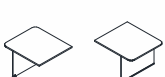

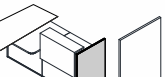

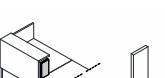
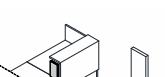
⚖️ - NET WEIGHT

📦 VOLUME


📦 NUMBER OF PACKAGES

PRODUCT ILLUSTRATION	DIMENSIONS [mm]/[inch]			INDEX SYMBOL						COMPONENTS
	WIDTH	DEPTH	HEIGHT			kg	m3	pcs		


COMPOSITION ELEMENTS


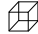

	800 31 1/2"	818 32 1/4"	1090 42 7/8"	TR08		25.0	0.054	1		
	1000 39 3/8"	818 32 1/4"	1090 42 7/8"	TR10		32.0	0.067	1		
	1200 47 1/4"	818 32 1/4"	1090 42 7/8"	TR12		36.0	0.079	1		
	1400 55 1/8"	818 32 1/4"	1090 42 7/8"	TR14		38.0	0.091	1		
	818 32 1/4"	818 32 1/4"	1090 42 7/8"	TR90		36.0	0.098	2		
	1000 39 3/8"	1120 44 1/8"	740 29 1/8"	TR11		30.0	0.092	1		
	1000 39 3/8"	282 11 1/8"	650 25 5/8"	TR99		17.0	0.183	1		decorative lighted element
	28 1 1/8"	820 32 1/4"	1090 42 7/8"	TR1L		17.0	0.035	1		side panel for high units - left
	28 1 1/8"	820 32 1/4"	1090 42 7/8"	TR1P		17.0	0.035	1		side panel for high units - right
	28 1 1/8"	182 7 1/8"	350 13 3/4"	TR2L		1.5	0.003	1		left upper side panel for combining low and high element
	28 1 1/8"	182 7 1/8"	350 13 3/4"	TR2P		1.5	0.003	1		right upper side panel for combining low and high element

DESCRIPTION

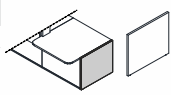
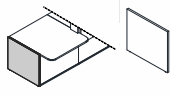
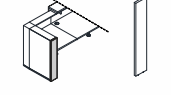
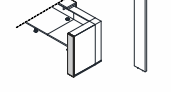

 - NET WEIGHT

 VOLUME

 NUMBER OF PACKAGES

PRODUCT ILLUSTRATION	DIMENSIONS [mm]/[inch]			INDEX SYMBOL						COMPONENTS
	WIDTH	DEPTH	HEIGHT			kg	m3	pcs		

COMPOSITION ELEMENTS

	28 1 1/8"	820 32 1/4"	740 29 1/8"	TR3L		12.0	0.025	1		left side panel for low unit
	28 1 1/8"	820 32 1/4"	740 29 1/8"	TR3P		12.0	0.025	1		right side panel for low unit
	28 1 1/8"	182 7 1/8"	1090 42 7/8"	TR4L		4.0	0.008	1		side panel for high units - left
	28 1 1/8"	182 7 1/8"	1090 42 7/8"	TR4P		4.0	0.008	1		side panel for high units - right
	585 23"	142 5 5/8"	712 28"	NL41		2.0	0.063	1		round profile leg