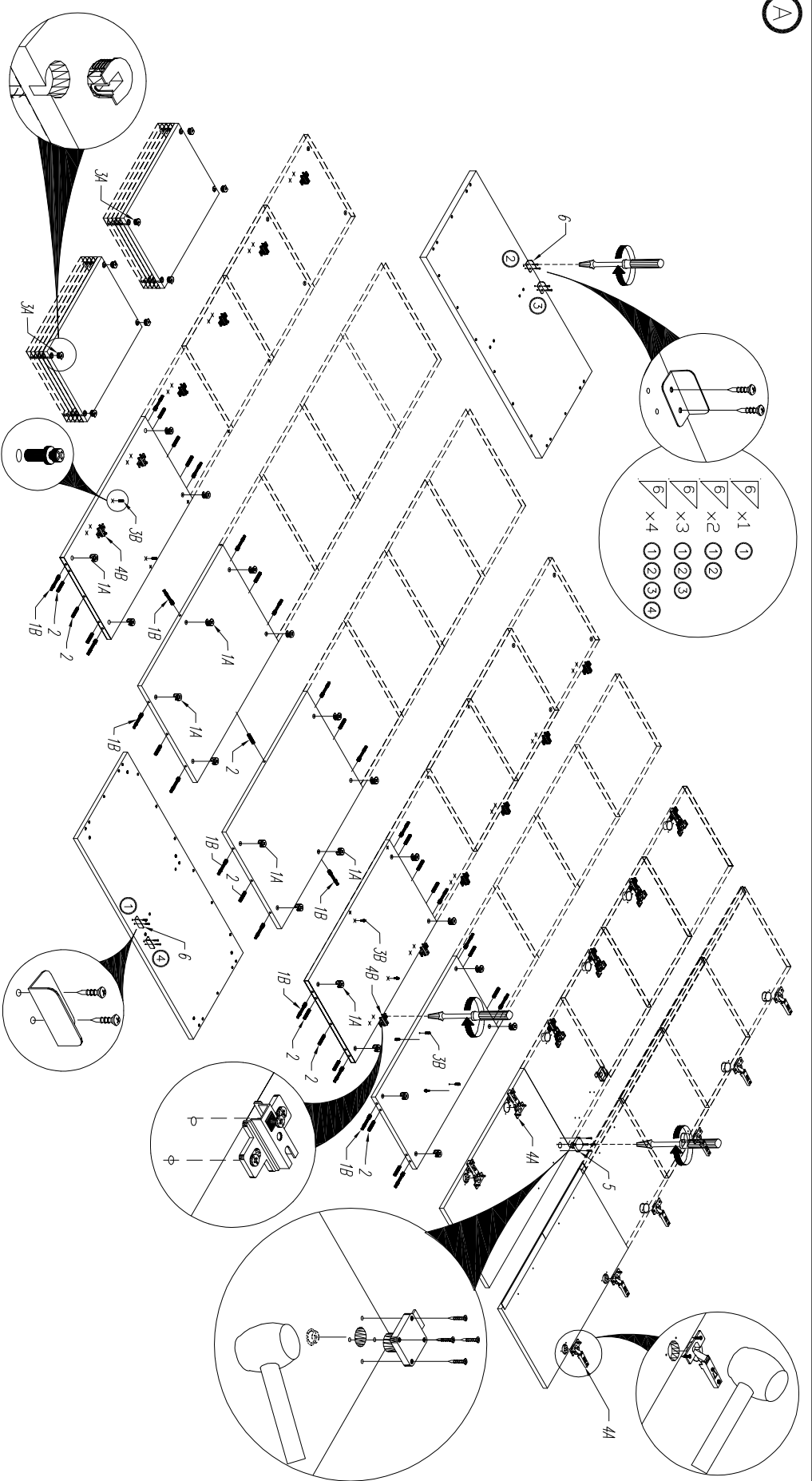
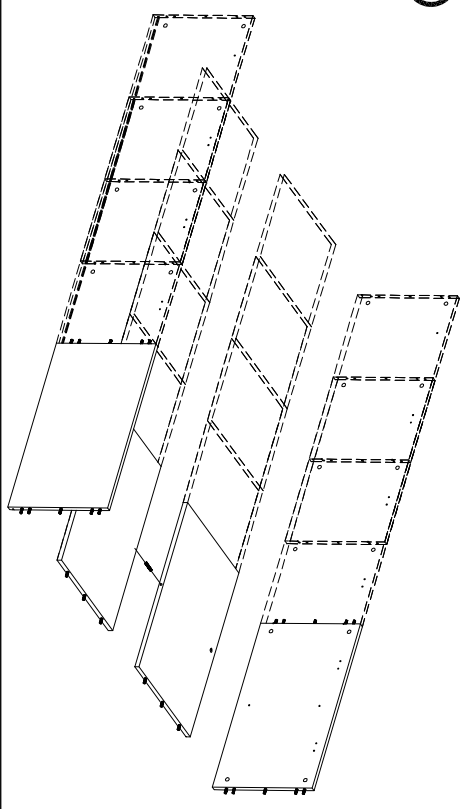


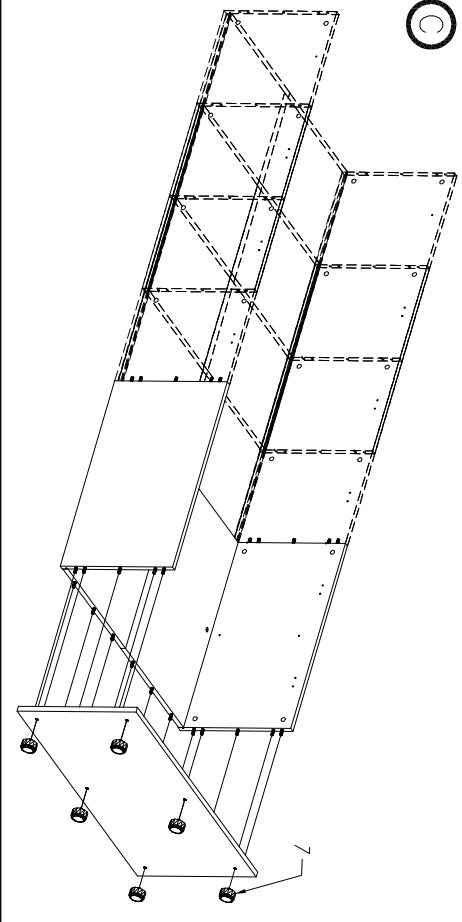
A



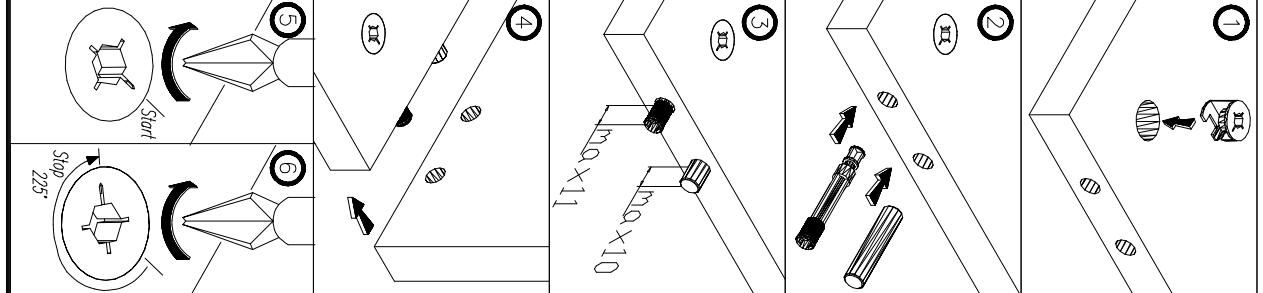
B



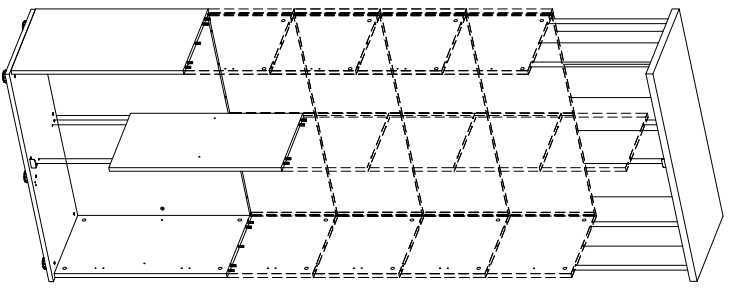
C



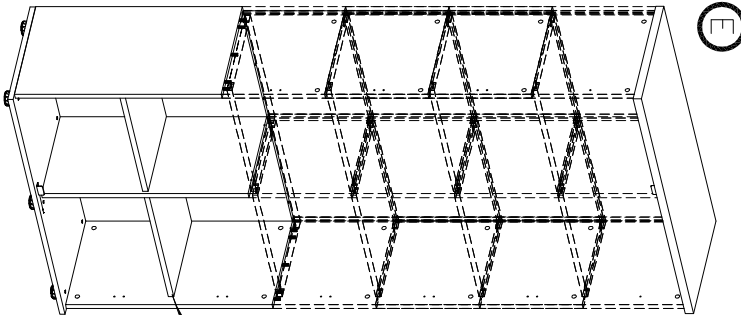
KOLEMIŃC MONTAŻU  
 MIMOSPODOW I KOKIŃKOW,  
 THE FITTINGS SEQUENCE OF THE  
 CAMS AND DOWELS.  
 DIE MONTAGEFOLGE VON  
 EXZERNEN UND DÜBELN.



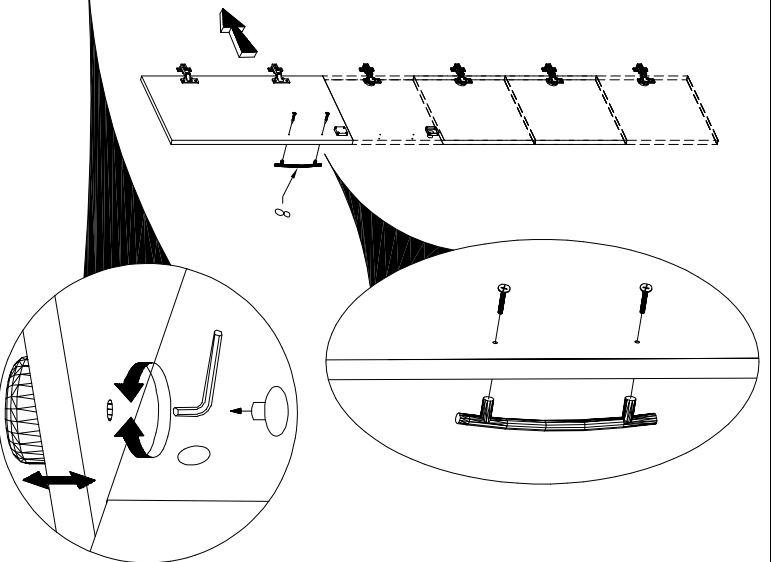
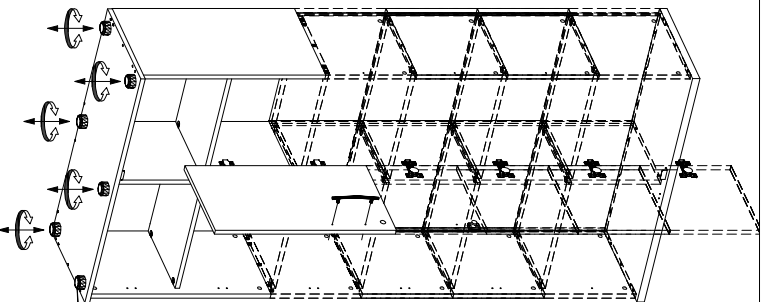
D



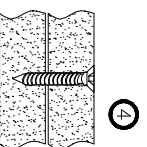
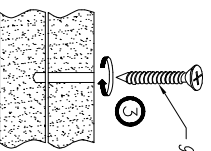
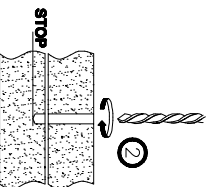
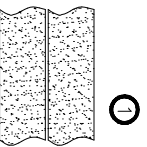
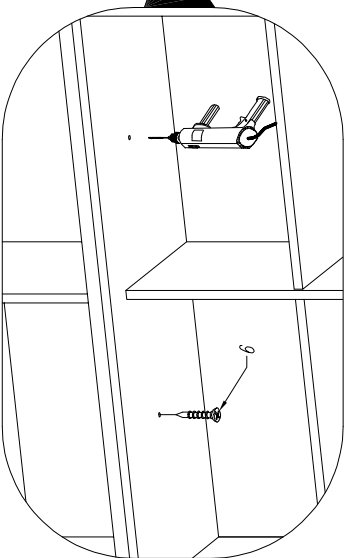
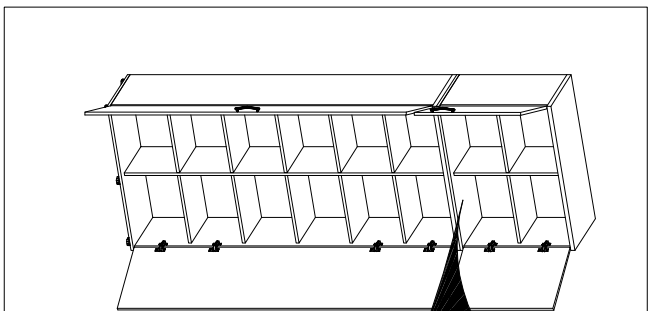
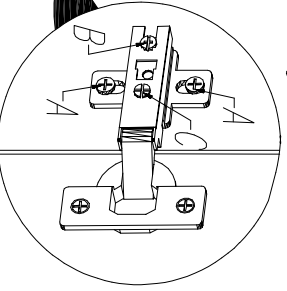
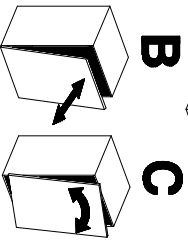
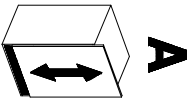
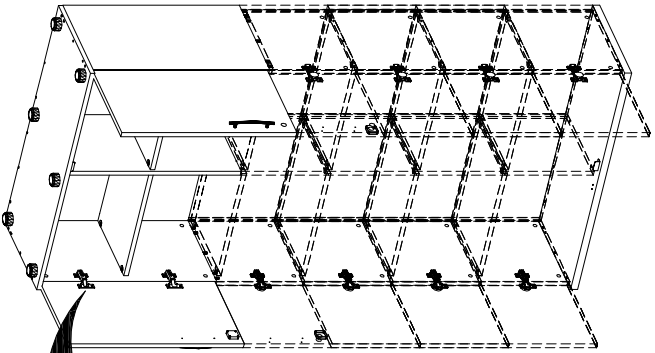
E



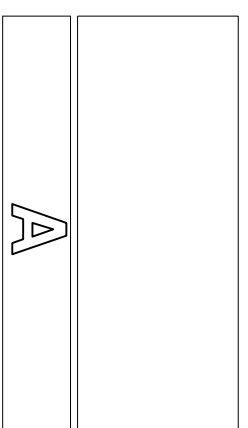
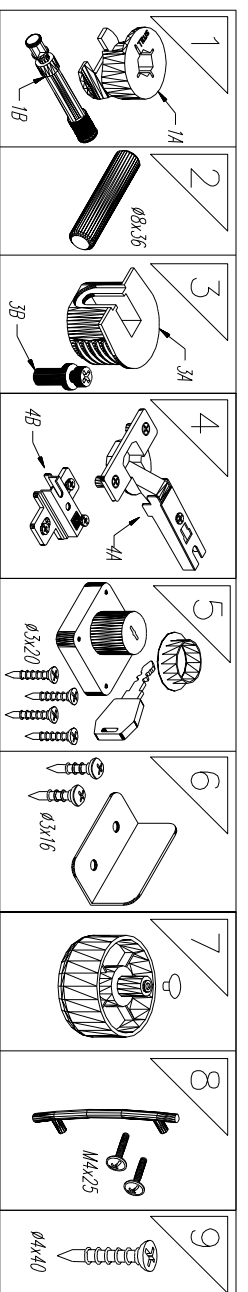
F



G



A1505  
A1105  
A1506  
A1106



--	--	--	--	--	--	--	--	--	--	--	--

<p>1 x30 2 x25 3 x40 4 5 6 7 x6 8 9</p>	<p>1 x30 2 x25 3 x40 4 x8 5 6 x2 7 x6 8 x2 9</p>	<p>1 x30 2 x25 3 x40 4 5 6 7 x6 8 9</p>	<p>1 x30 2 x25 3 x40 4 x8 5 6 x2 7 x6 8 x2 9</p>	<p>1 x28 2 x24 3 x32 4 5 6 7 x6 8 9</p>	<p>1 x28 2 x24 3 x32 4 x8 5 6 x2 7 x6 8 x2 9</p>	<p>1 x28 2 x24 3 x32 4 5 6 7 x6 8 9</p>	<p>1 x28 2 x24 3 x32 4 x8 5 6 x2 7 x6 8 x2 9</p>	<p>1 x24 2 x25 3 x24 4 5 6 7 x6 8 9</p>	<p>1 x24 2 x25 3 x24 4 x6 5 6 x2 7 x6 8 x2 9</p>	<p>1 x24 2 x25 3 x24 4 x6 5 6 x2 7 x6 8 x2 9</p>
---	--	---	--	---	--	---	--	---	--	--

<p>1 x24 2 x22 3 x16 4 5 6 7 x6 8 9</p>	<p>1 x24 2 x22 3 x16 4 x4 5 x1 6 x3 7 x6 8 x2 9</p>	<p>1 x24 2 x22 3 x16 4 5 6 7 x6 8 9</p>	<p>1 x24 2 x22 3 x16 4 x4 5 x1 6 x3 7 x6 8 x2 9</p>	<p>1 x22 2 x21 3 x8 4 5 6 7 x6 8 9</p>	<p>1 x22 2 x21 3 x8 4 x4 5 x1 6 x3 7 x6 8 x2 9</p>	<p>1 x22 2 x21 3 x8 4 5 6 7 x6 8 9</p>	<p>1 x22 2 x21 3 x8 4 x4 5 x1 6 x4 7 x4 8 x2 9 x2</p>	<p>1 x22 2 x21 3 x8 4 5 6 7 x6 8 9</p>	<p>1 x22 2 x21 3 x8 4 x4 5 x1 6 x4 7 x4 8 x2 9 x2</p>	<p>1 x22 2 x21 3 x8 4 5 6 7 x6 8 9</p>	<p>1 x22 2 x21 3 x8 4 x4 5 x1 6 x4 7 x4 8 x2 9 x2</p>
---	---	---	---	--	--	--	---	--	---	--	---