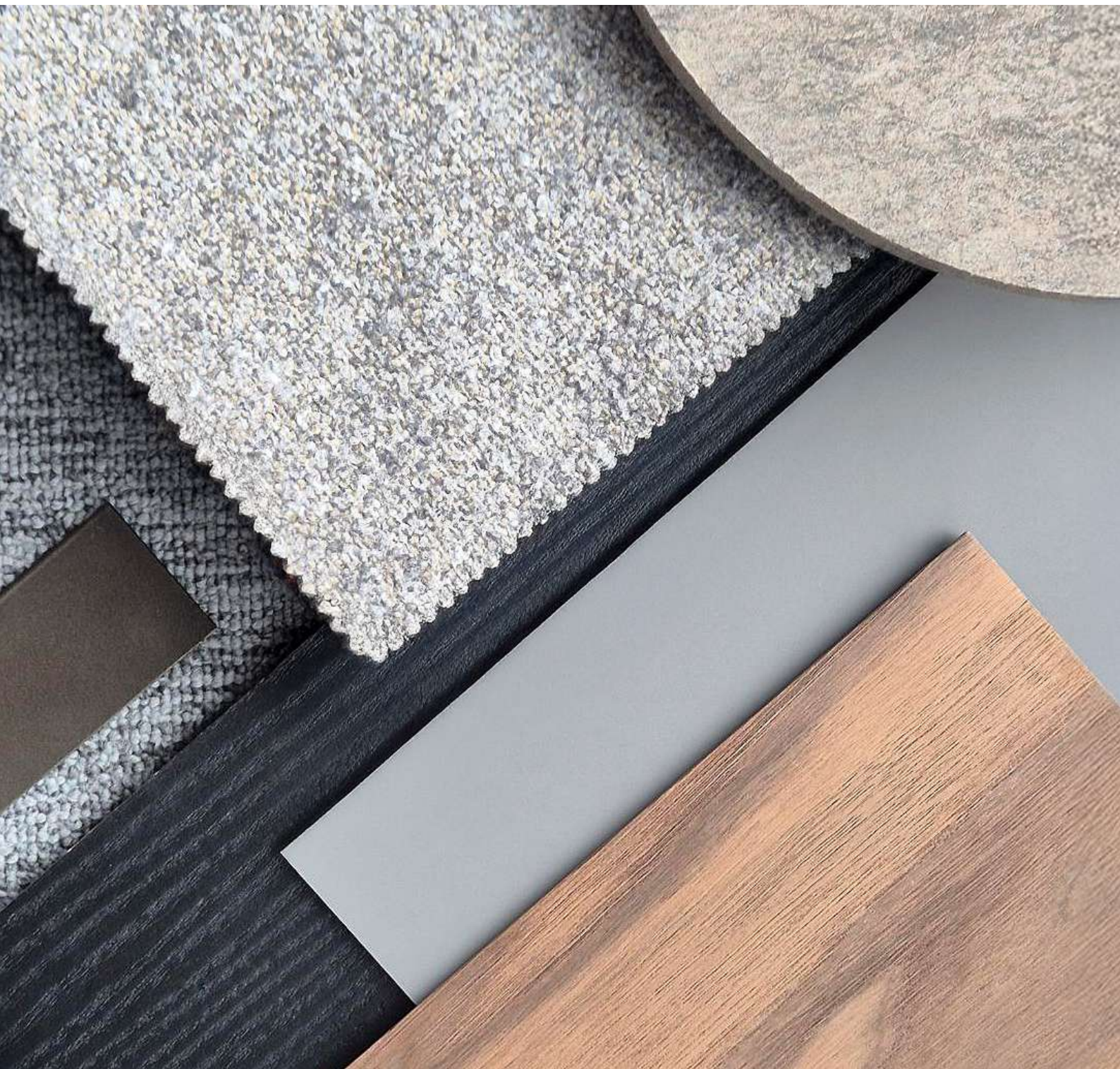


Combinations of finishes

By NARBUTAS design team



NARBUTAS palette of finishes: easy to combine and simple to choose

NARBUTAS palette of finishes is well thought out. Composed of carefully selected colours, materials and textures, it becomes a handy tool that is easy to use for choosing the finish you want or creating combinations of them. Filled with calm, earthy natural colours, it allows you to bring more home cosiness and warmth into your office.

Created to inspire.



PARTHOS | SANDIE | ACOUSTIC ARTWORK Wall | ACOUSTIC ARTWORK Ceiling



Berta

GA13



PET felt

BA02



PET felt

BA26



PET felt

BA11

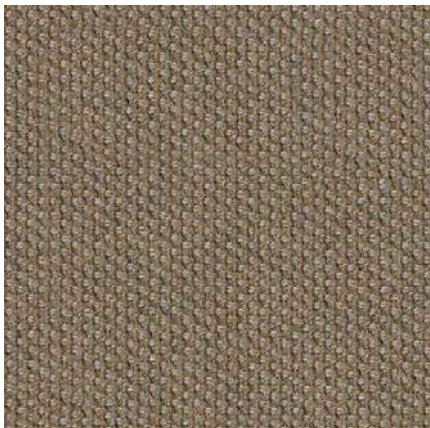


HPL Fenix

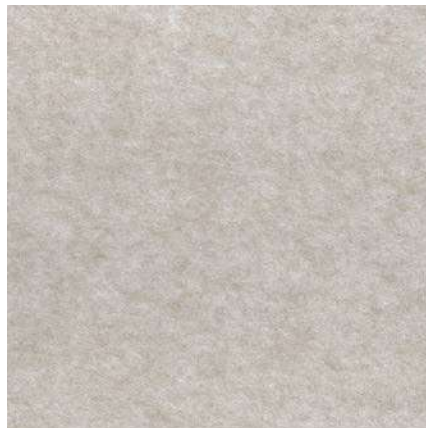
HA10



SANDIE | NOVA Wood | ACOUSTIC ARTWORK Wall

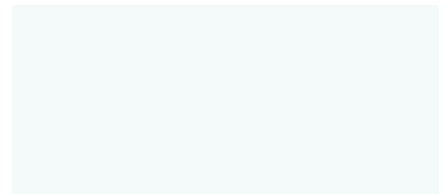


Cyber



GB12

PET felt



HPL

HA19LA03



Solid wood

NB01



SONUS S | WIND | MOTION | GIRO



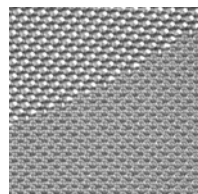
PET felt

BA02



Synergy

GS32



Knitted mesh

FK02



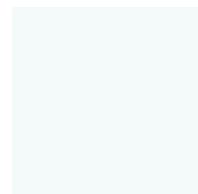
Melamine

PA07



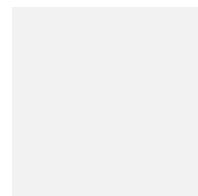
Cyber

GB11



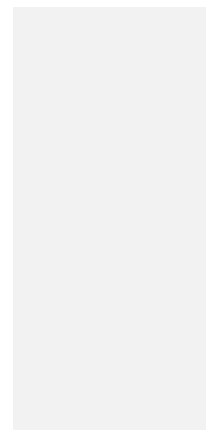
HPL

HA19LA03



Melamine

PA01



Metal

MA03



NOVA A | OFY | ACOUSTIC ARTWORK Partitions | SOFT ROCK | ACOUSTIC ARTWORK Wall



Austea GT10



PET felt BA18



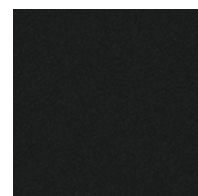
PET felt BA02



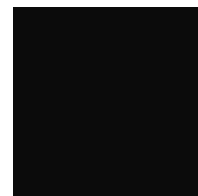
Austea GT07



Melamine PA05PA15



Plastic TA09



Metal MA01



PARTHOS | OFY | ACOUSTIC ARTWORK Wall | ACOUSTIC ARTWORK Ceiling



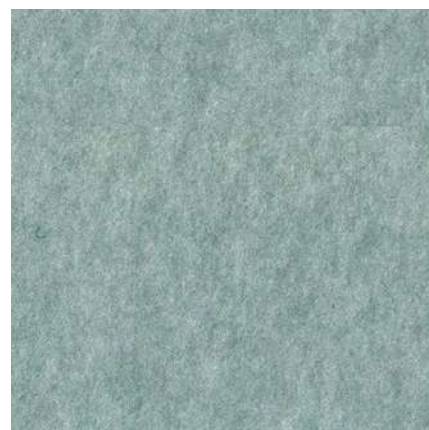
PET felt BA23



Austea GT10



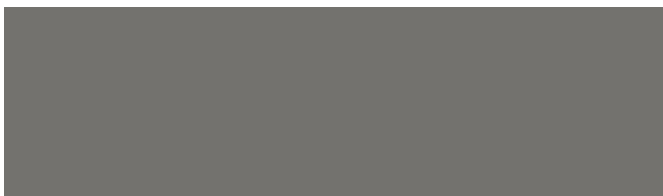
PET felt BA18



PET felt BA27



SANDIE | PARTHOS



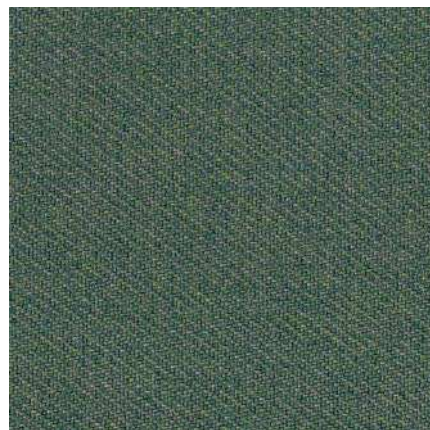
HPL

HA10LA04



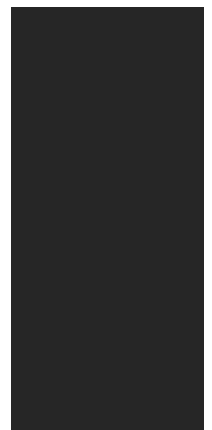
PET felt

BA02



Austea

GT10



Melamine

PA05



SONUS | WOBBY | ACOUSTIC ARTWORK Wall



PET felt BA11



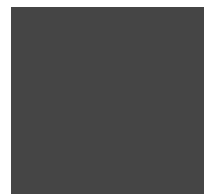
PET felt BA17



PET felt BA28



Cyber GB07



Melamine PA03



ROUND Multipurpose | WIND | ACOUSTIC ARTWORK Wall



PET felt

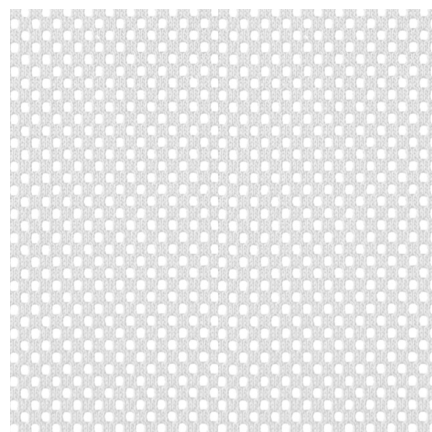
BA02



Melamine PA06

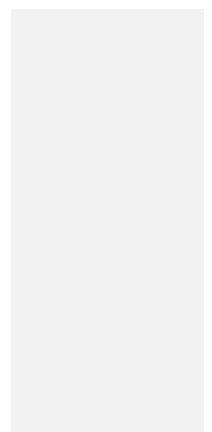


Synergy GS37



Micro

FM05



Metal

MA03



ACOUSTIC ARTWORK Partitions | MOTION | GIRO | ACOUSTIC ARTWORK Wall



PET felt

BA11



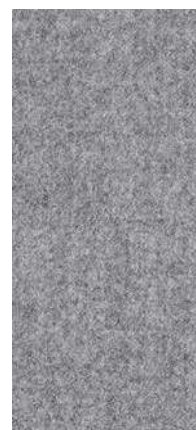
PET felt

BA02



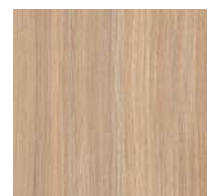
Synergy

GS32



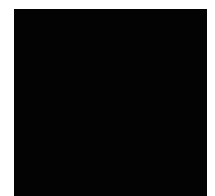
Synergy

GS16



Melamine

PA07

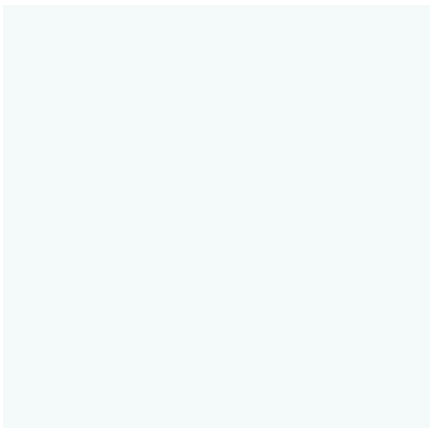


Metal

MA01



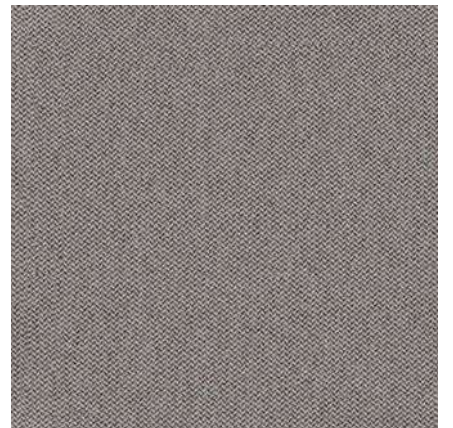
JAZZ Chill Out | NOVA Wood | GIRO



HPL



Solid wood



Era

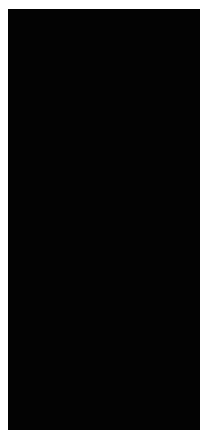
HA19LA03

NB01

GC02



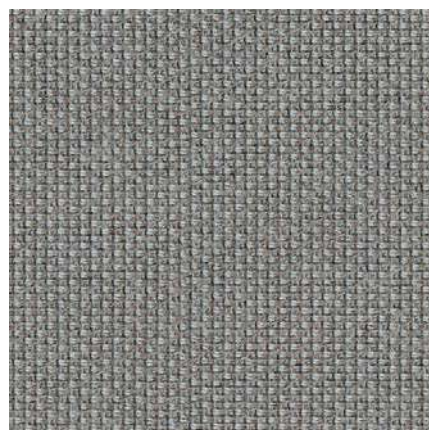
ZEDO | MOON



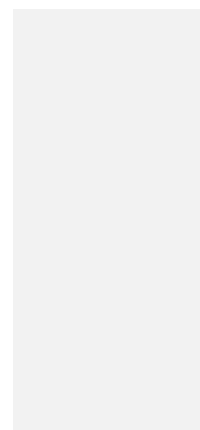
Metal MA01



Melamine PA04



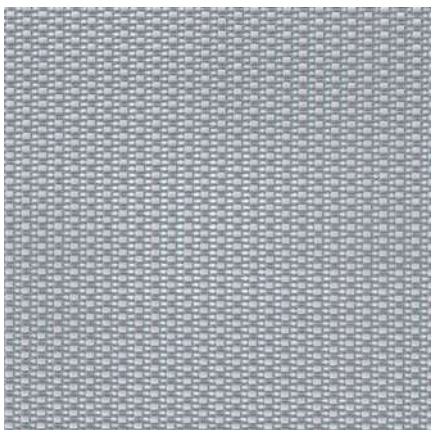
Cyber GB03



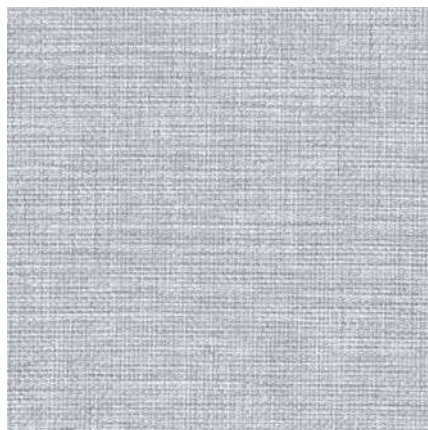
Metal MA03



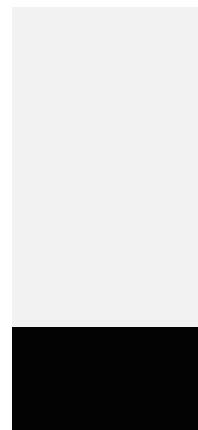
NOVA U | D-CHAIR | TOP 530



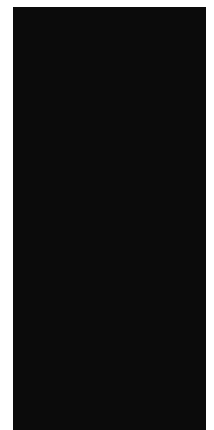
SS mesh



Berta



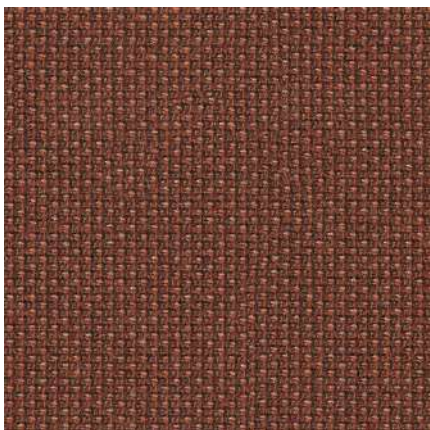
Melamine
PA01PA05



Metal
MA01



OFY | NOVA



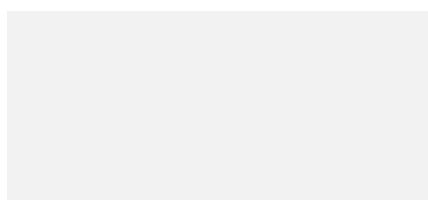
Cyber

GB13



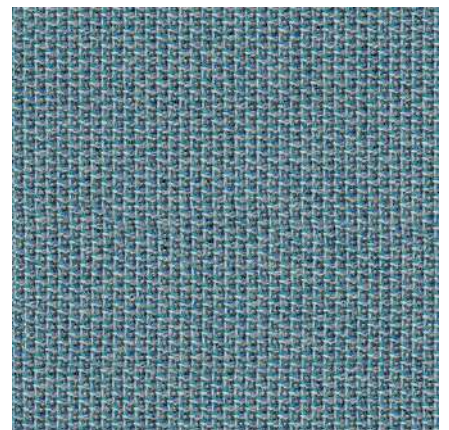
Melamine

PA08



Metal

MA03

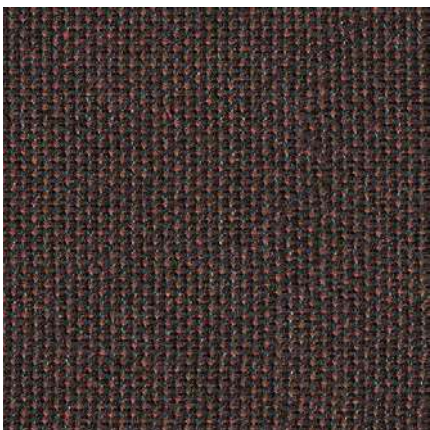


Cyber

GB04



SANDIE | ARQUS



Cyber

GB15



Veneer

NC01

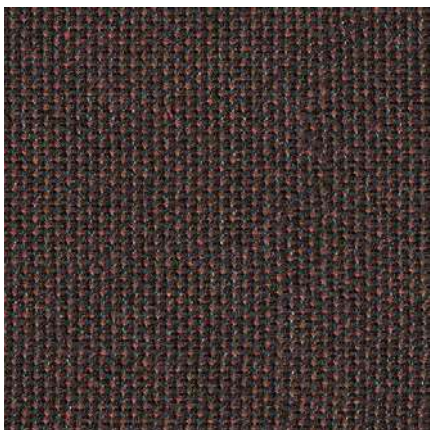


Metal

MA01



SANDIE | ARQUS



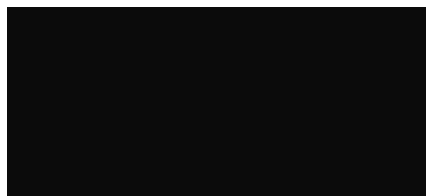
Cyber

GB15



Veneer

NC03



Metal

MA01

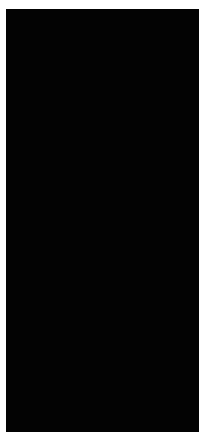


Austea

GT04



SILENT ROOM S | WOBBY | COMBUS



Melamine PA05



Step Melange GL24



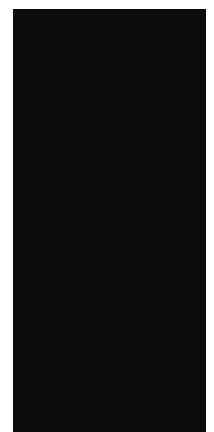
Austea GT08



Melamine PA07



Melamine PA04



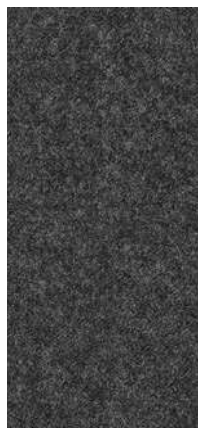
Metal MA01



ZooZoo | DANAÉ | ARCIPELAGO



Valencia C5



DV01 Synergy GS17



Veneer NC01



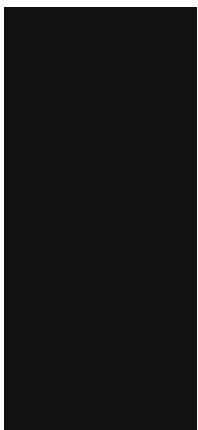
Solid wood NB02



Metal MA01



SANDIE | PARTHOS



HPL HA09LA02



Cyber GB17



Cyber GB14



Cyber GB11



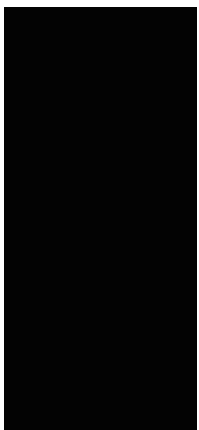
Cyber GB16



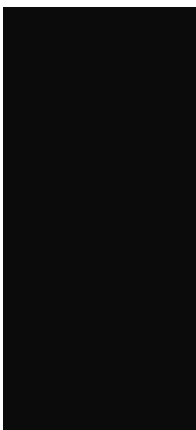
PET felt BA02



SANDIE | PARTHOS | ACOUSTIC ARTWORK Wall



Melamine PA05



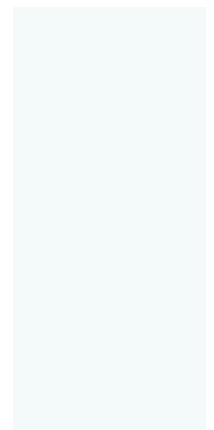
Metal MA01



Austea



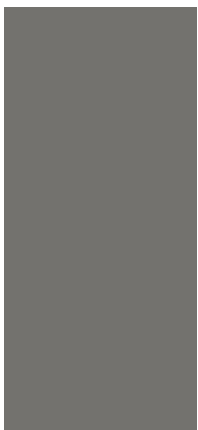
PET felt BA11



HPL HA19LA03



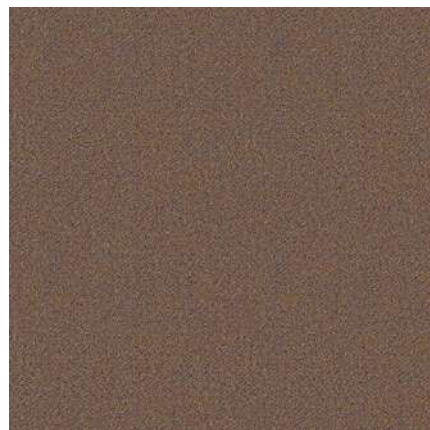
SANDIE | PARTHOS | ACOUSTIC ARTWORK Wall



HPL HA10LA04
Fenix



PET felt BA02



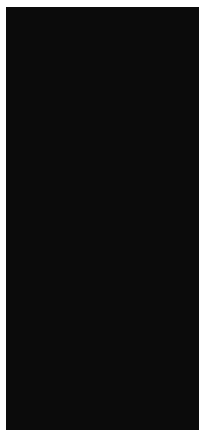
Synergy GS37



PET felt BA08



NOVA | OFY | CHOICE | ACOUSTIC ARTWORK Ceiling



Metal MA01



Austea

GT04



PET felt

BA11



Melamine

PA10



Melamine

PA04

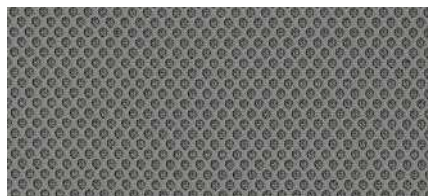


NOVA Wood Multipurpose | WIND



Solid wood

NB01



Runner mesh

FR03



Synergy

GS16



HPL

HA09



ZooZoo | SOFT ROCK | PARTHOS | TWIST&SIT



Austea GT08



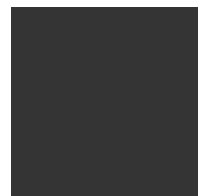
Cyber GB16



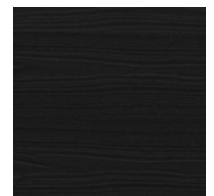
Synergy GS37



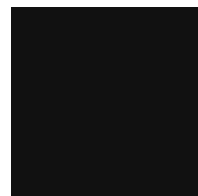
PET felt BA01



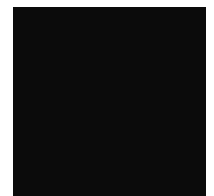
Melamine PA03



Veneer NC01



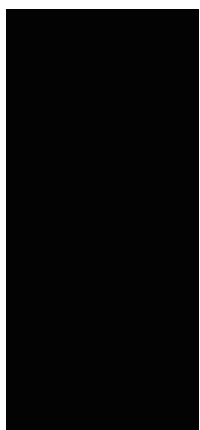
HPL HA09LA02



Metal MA01



ROUND Multipurpose | ROUND | OFY | ACOUSTIC ARTWORK Accessories | ACOUSTIC ARTWORK Wall



Metal MA01



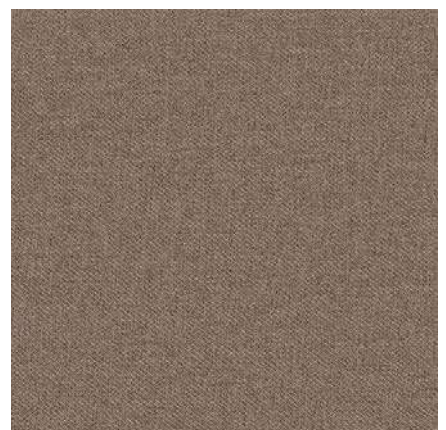
Melamine PA04



Melamine PA08



PET felt BA02



Austea GT07



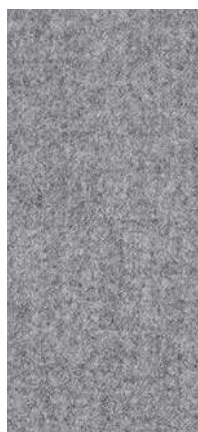
ROUND Multipurpose | CANNIE | JAZZ Chill Out | ARCIPELAGO | PARTHOS | TWIST&SIT



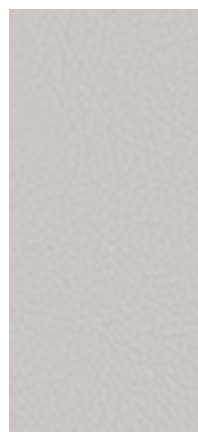
Metal MA01



Synergy GS17



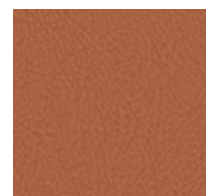
Synergy GS16



Valencia C5 DV13



Melamine PA04



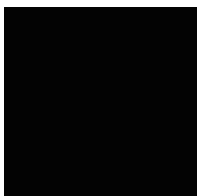
Valencia C5 DV01



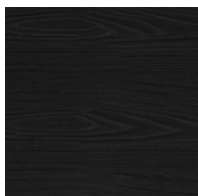
Solid wood NB01



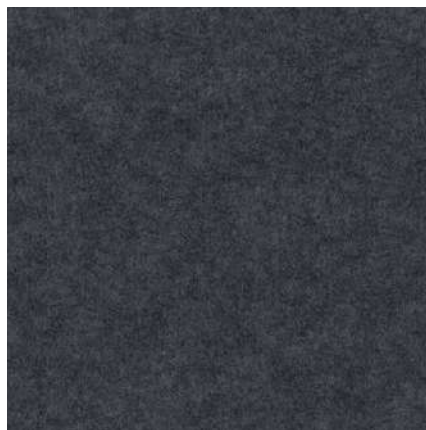
SONUS S | TWIST&SIT | ARQUS | NORTH CAPE | PLANA | JAZZ Chill Out



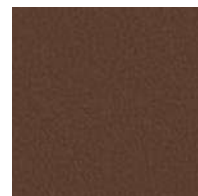
Melamine PA05



Veneer NC01



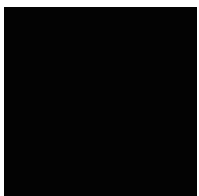
PET felt BA08



Valencia C5 DV12



Cyber GB13



Metal MA01



Solid wood NB02



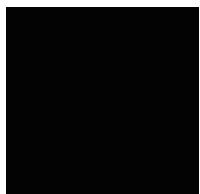
Melamine PA03



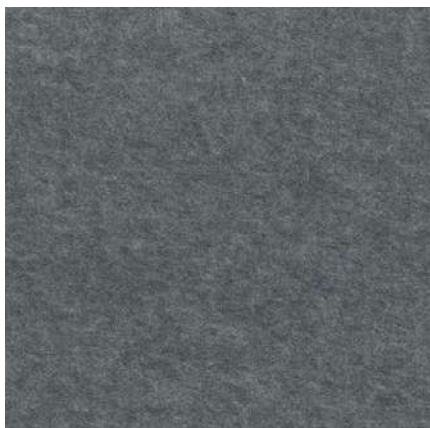
Valencia C5 DV05



SONUS S | WOBBY | TWIST&SIT | ZooZoo



Melamine PA05



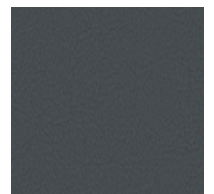
PET felt BA01



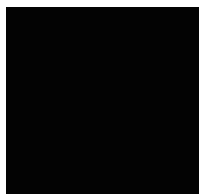
Austea GT08



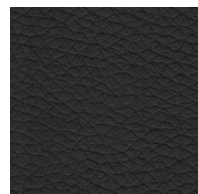
Cyber GB17



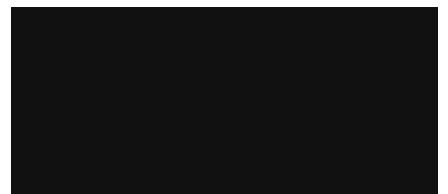
Valencia C5 DV10



Metal MA01



RNN DZ02



HPL HA09



Q-ACTIVE | SURF | CHOICE | WOBBY



Austea

GT04



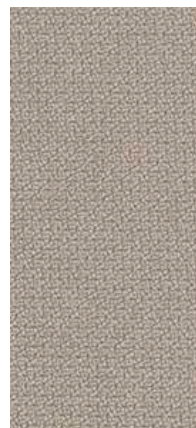
Melamine

PA10



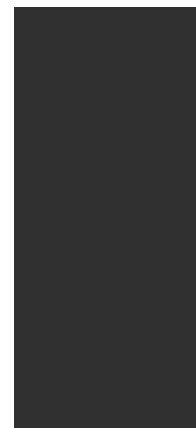
SS mesh

FR04



Step

GL15



Metal

MA01

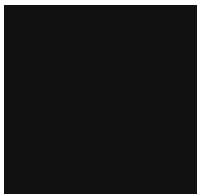


Cyber

GB10



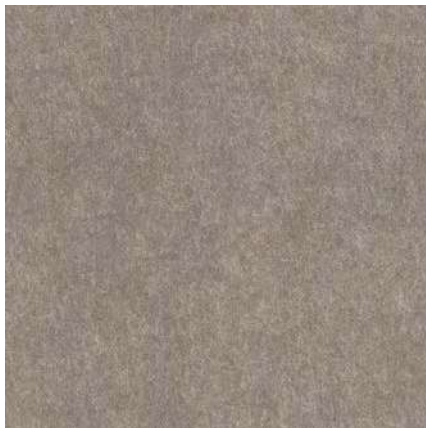
SOFT ROCK | PARTHOS | ACOUSTIC ARTWORK Ceiling



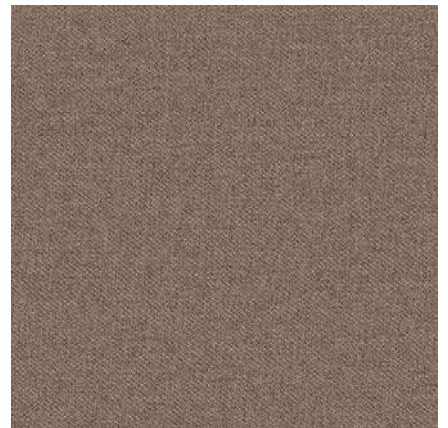
HPL HA09



PET felt BA01



PET felt BA02



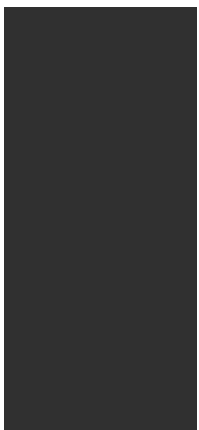
Austea GT07



PET felt BA08



Q-ACTIVE | OFY | ACOUSTIC ARTWORK Wall



Metal MA01



Melamine PA10



PET felt BA10



Austea GT03



ACOUSTIC ARTWOR Ceiling | COMBUS | PARTHOS | SOFT ROCK | NOVA Wood Multipurpose | WOBBY



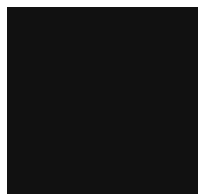
Metal MA01



PET felt BA08



Synergy GS37



HPL HA09



PET felt BA07



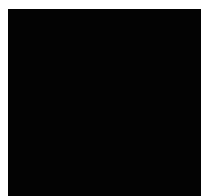
Austea GT04



PET felt BA11



SILENT ROOM L | SILENT ROOM S | TWIST&SIT | ACOUSTIC ARTWOR Ceiling | SOFT ROCK | PARTHOS



Metal MA01



Austea GT09



PET felt BA11



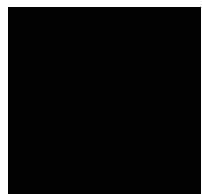
PET felt BA10



Melamine PA07



Austea GT04



Melamine PA05

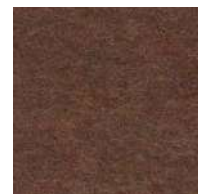


Austea

GT08



PET felt BA02



PET felt BA07

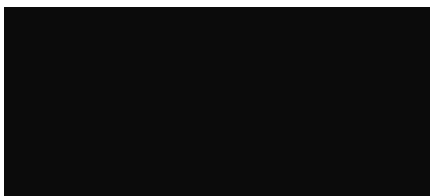


CHOICE | TWIST&SIT | NOVA



Valencia C5

DV05



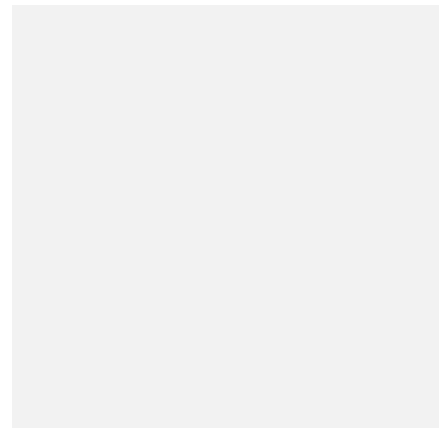
Metal

MA01



Melamine

PA07



Melamine

PA01



Q-ACTIVE | D-CHAIR | BOXI | ACOUSTIC ARTWORK Wall



Melamine

PA07



PET felt

BA02



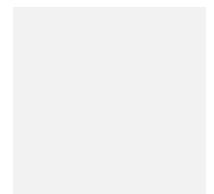
Austea

GT09



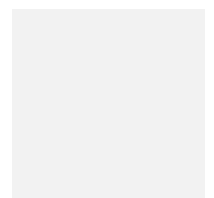
SS mesh

FW05



Metal

MA03

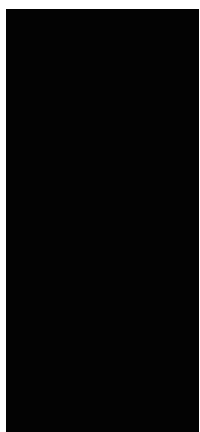


Melamine

PA01



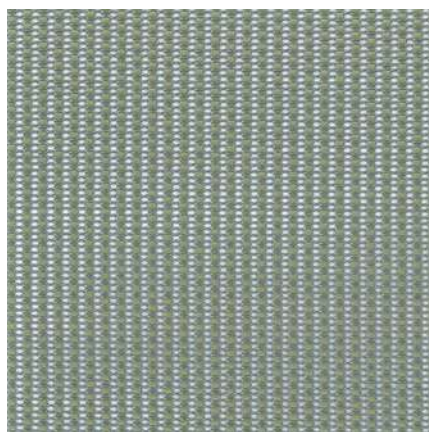
D-CHAIR | FORUM



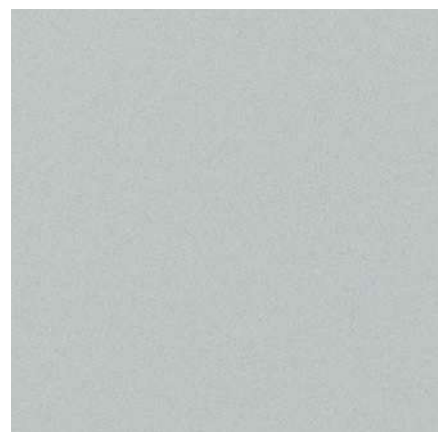
Metal MA01



Melamine PA04



SS mesh FW05



Plastic TA12



D-CHAIR | ZEDO | PARTHOS



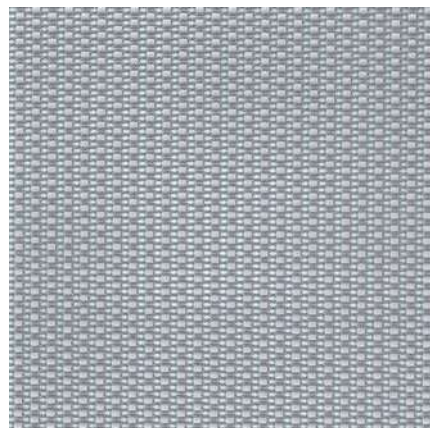
Melamine PA06



PET felt BA11



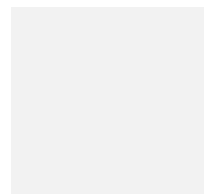
PET felt BA02



SS mesh FW03



Plastic TA12



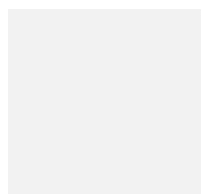
Metal MA03



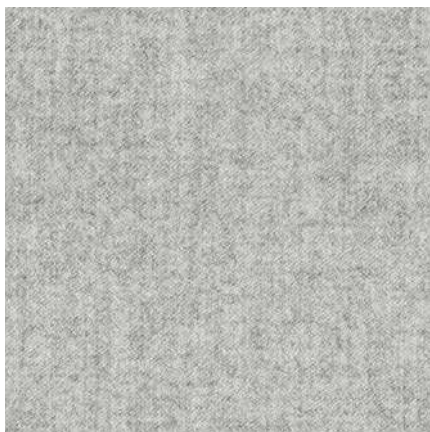
D-CHAIR | MOTION



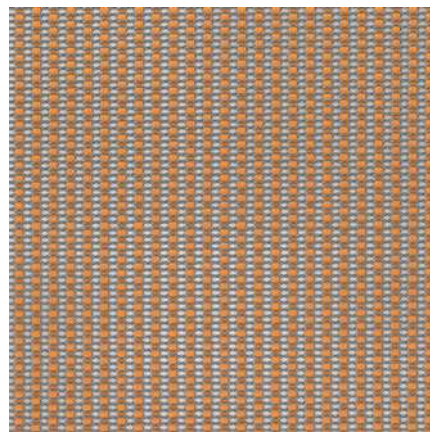
Plastic TA12



Metal MA03



Synergy GS08



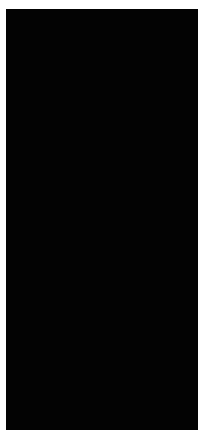
SS mesh FW09



Melamine PA09



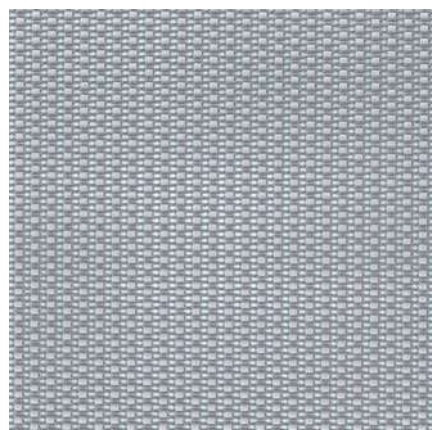
D-CHAIR | ARQUS



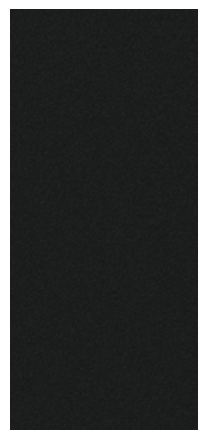
Metal MA01



Veneer NC02



SS mesh FW03



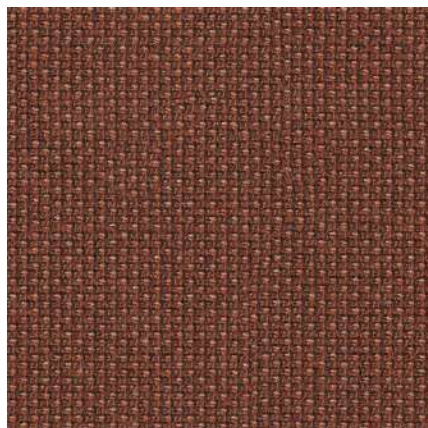
Plastic TA09



TWIST&SIT | ARQUS



Metal



Cyber



Veneer

MA01

GB13

NC01



ARQUS | D-CHAIR



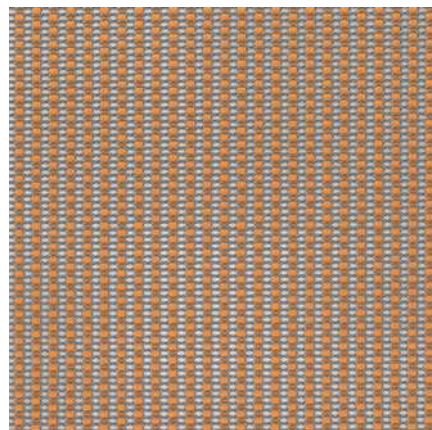
Veneer

NC02



Metal

MA05



SS mesh

FW09

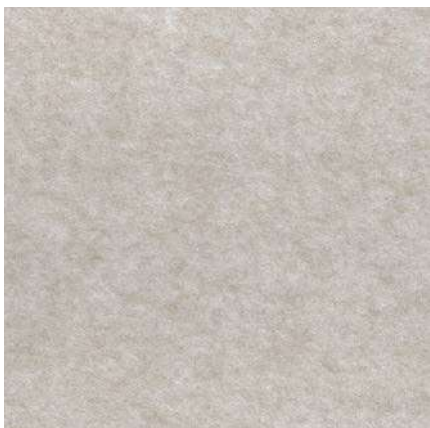


Plastic

TA09



SOFT ROCK | MOBI



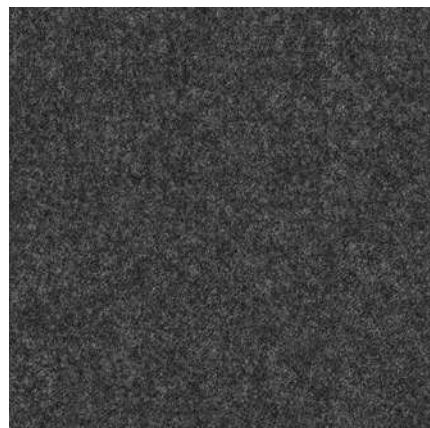
PET felt



BA11

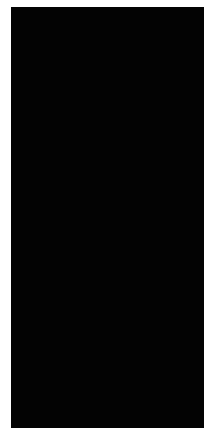
Melamine

PA07



Synergy

GS17

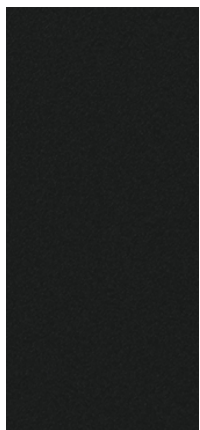


Metal

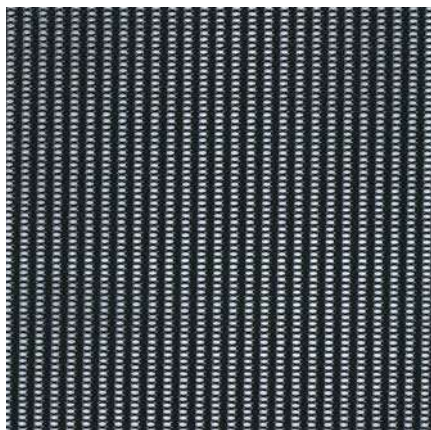
MA01



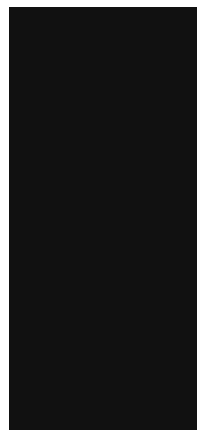
MOTION Executive | D-CHAIR



Plastic TA09



SS mesh FW01



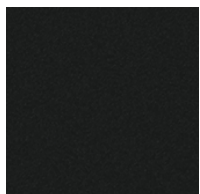
HPL HA09



Veneer NC03



ZEDO | OFY | ACOUSTIC ARTWORK Wall



Plastic TA09



Cyber GB12



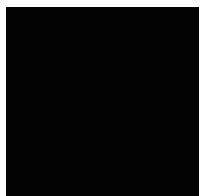
Cyber GB11



PET felt BA02



Melamine PA02



Metal MA01



Melamine PA09



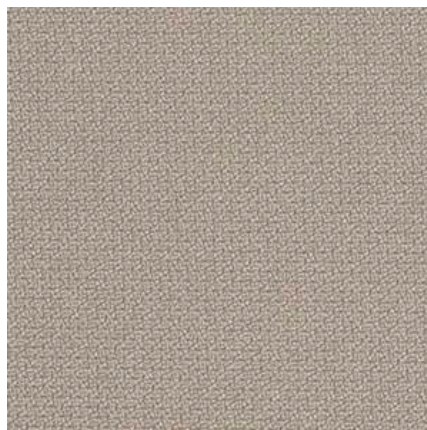
NOVA Wood | TWIST&SIT



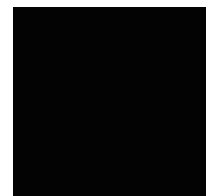
Solid wood NBO2



HPL Fenix HA10



Step GL15



Metal MA01



Solid wood NBO1



PLANA | NORTH CAPE



Veneer

NC02



Metal

MA05



Valencia C5

DV02

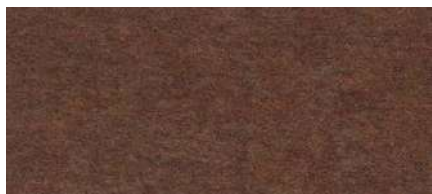


SOFT ROCK | ACOUSTIC ARTWORK Ceiling | ACOUSTIC ARTWORK Partitions | MOTION | WIND | TWIST&SIT Soft



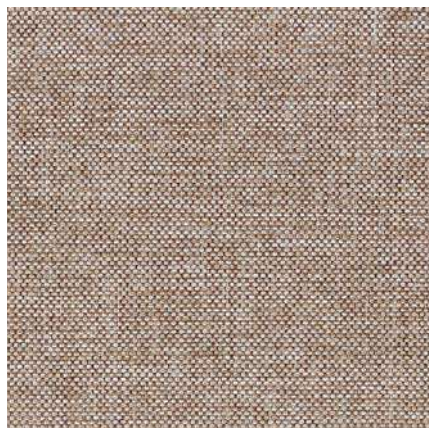
PET felt

BA10



PET felt

BA07



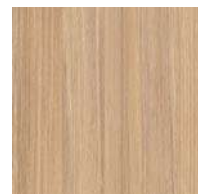
Berta

GA08



Synergy

GS08



Melamine

PA07

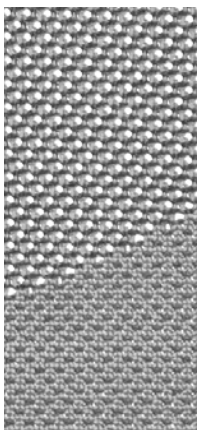


PET felt

BA11



ACOUSTIC ARTWORK Wall | WIND | NOVA A | NOVA FABRIC



Knitted mesh FK02



Synergy GS32



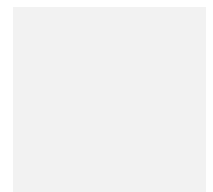
PET felt BA19



PET felt BA20



PET felt BA29



Metal MA03



Melamine PA07



ACOUSTIC ARTWORK Partitions | ACOUSTIC ARTWORK Ceiling | TWIST&SIT Soft | NOVA Wood



Melamine PA04



Solid wood NB01



PET felt BA02



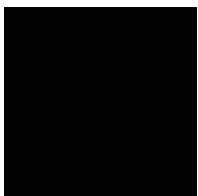
PET felt BA10



Austea GT04



ACOUSTIC ARTWORK Accessories | ROUND | DIVA



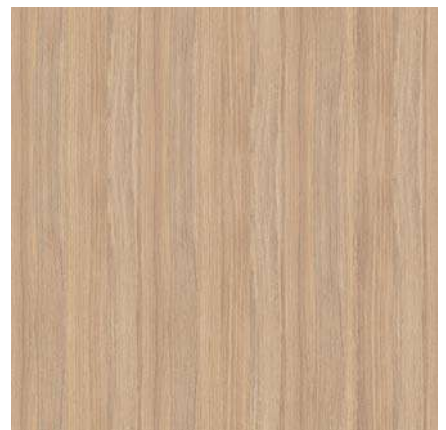
Metal MA01



Cyber GB16



PET felt BA10



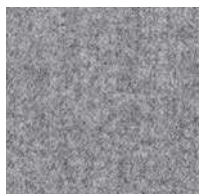
Melamine PA07



PET felt BA02



ACOUSTIC ARTWORK Partitions | ACOUSTIC ARTWOR Ceiling | ACOUSTIC ARTWOR Wall | SOFT ROCK | ICE | GIRO | MOTION



Synergy GS16



PET felt BA11



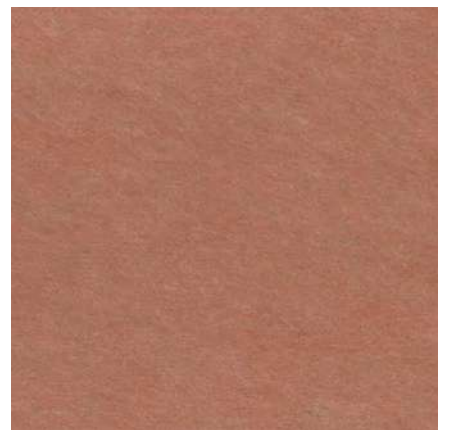
Melamine PA07



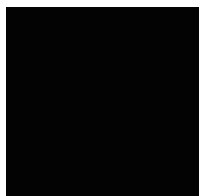
Synergy GS32



PET felt BA02



PET felt BA10



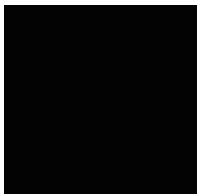
Melamine PA05



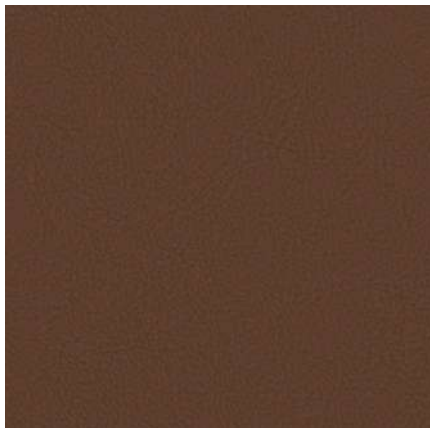
TWIST&SIT | NOVA | SITO | JAZZ Chill Out



Melamine PA10



Metal MA01



Valencia C5 DV12



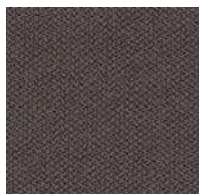
Valencia C5 DV01



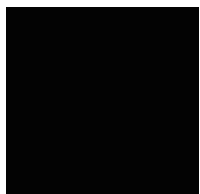
Valencia C5 DV13



SILENT ROOM | TWIST&SIT | MEDIA



Era GC21



Metal MA01



Berta GA14



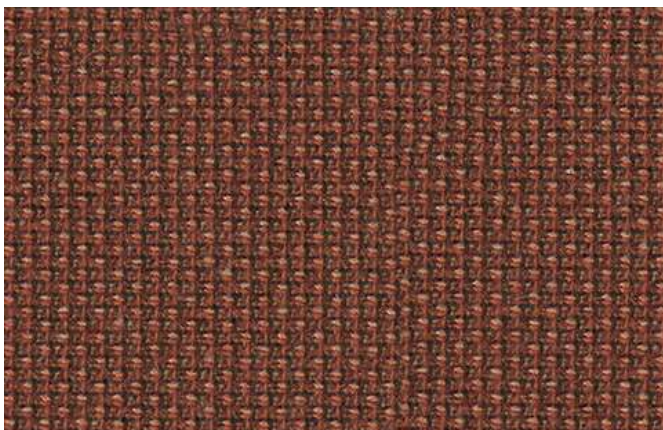
Berta GA10



Melamine PA09



SOFT ROCK | MOBI | GIRO

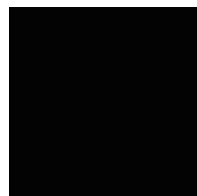


Cyber

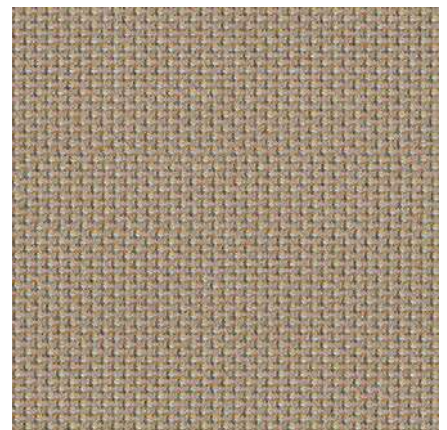
GB13



Melamine PA09



Metal MA01



Cyber

GB11



ACOUSTIC ARTWORK Wall | TWIST&SIT Soft



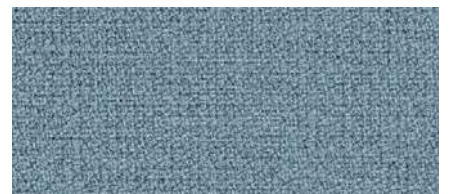
Synergy

GS73



Synergy

GS74



Step Melange

GL06



PET felt

BA07



Solid wood

NB01



PET felt

BA11

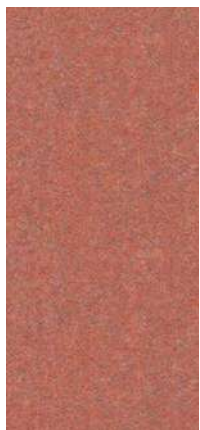


PET felt

BA01



ROUND | ROUND PET | SURF



Synergy GS73



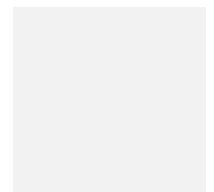
PET felt BA10



PET felt BA02



SS mesh FRO4



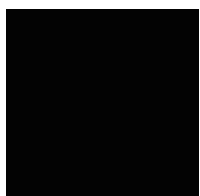
Metal MA03



Melamine PA07



SILENT ROOM L | SILENT ROOM S | TWIST&SIT | SOFT ROCK | PARTHOS | GIRO | WOBBY



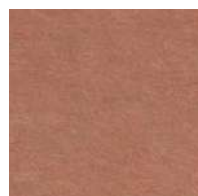
Metal MA01



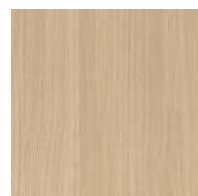
Austea GT10



Austea GT11



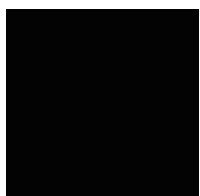
PET felt BA10



Melamine PA06



Austea GT04



Melamine PA05



Austea GT09



Austea GT08



PET felt BA02



NOVA U | TWIST&SIT | WIND | NOVA



Veneer NAO3



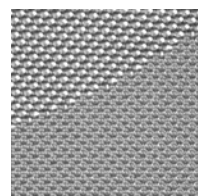
Synergy GS42



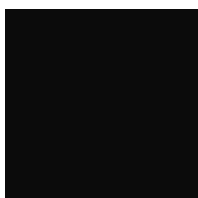
Synergy GS48



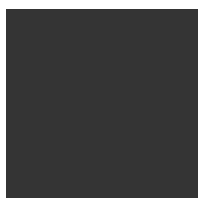
Synergy GS32



Knitted mesh FK02



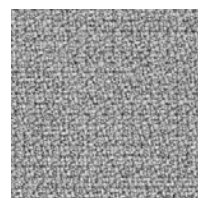
Metal MA01



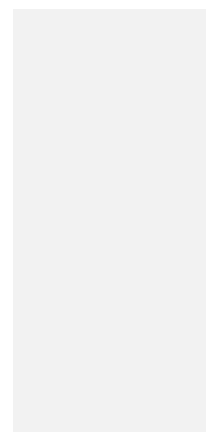
Melamine PA03



Melamine PA04



Step Melange GL12



Melamine PA01



CHOICE | SOFT ROCK | ACOUSTIC ARTWORK Ceiling | PARTHOS



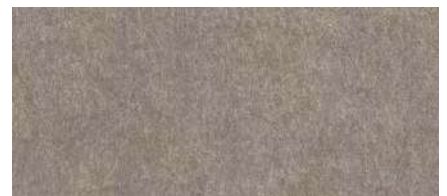
Cyber

GB11



Melamine

PA02



PET felt

BA02



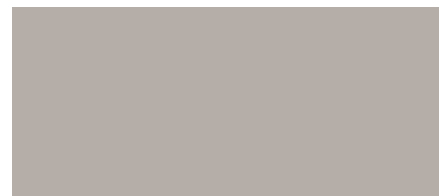
Metal

MA07



Melamine

PA07

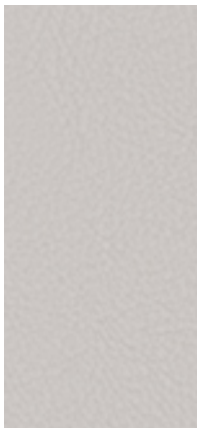


HPL

HA02



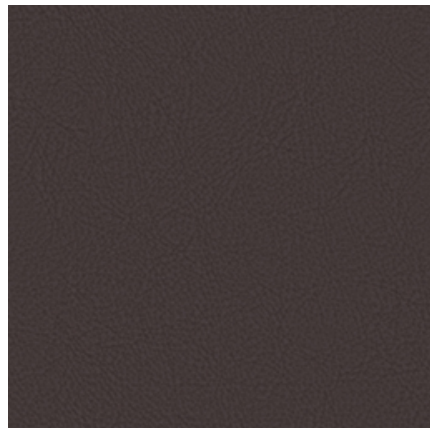
TWIST&SIT | JAZZ Chill Out | SITO



Valencia C5 DV13



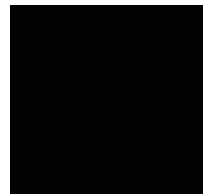
Valencia C5 DV09



Valencia C5 DV07



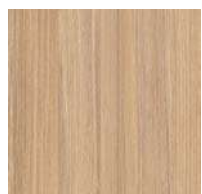
Melamine PA08



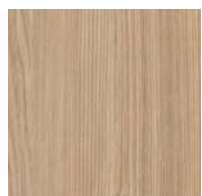
Metal MA01



NORTH CAPE | NOVA Wood | NOVA



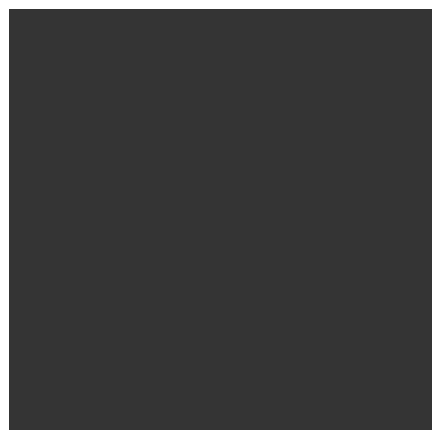
Melamine PA07



Solid wood NB01



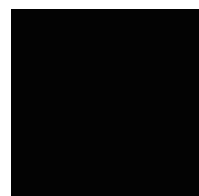
Synergy GS49



Melamine PA03



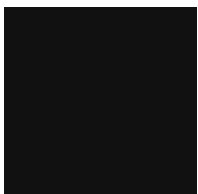
Plexiglas® SB06



Metal MA01



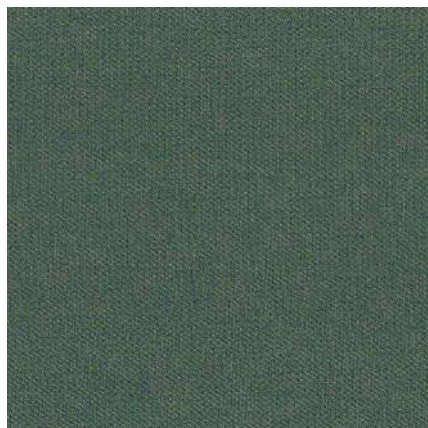
TWIST&SIT Soft | PARTHOS



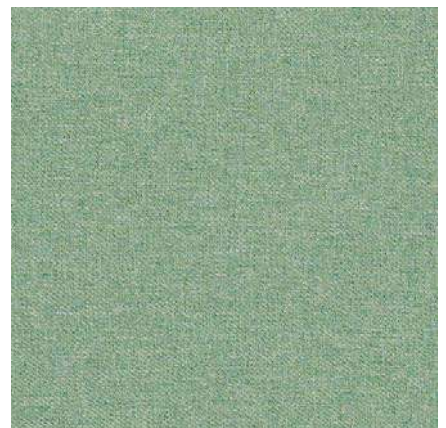
HPL HA09



PET felt BA08



Austea GT10



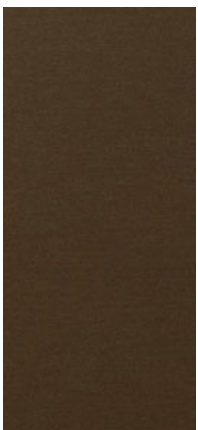
Austea GT09



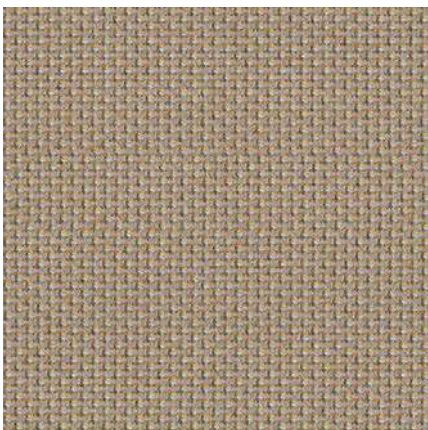
Solid wood NBO2



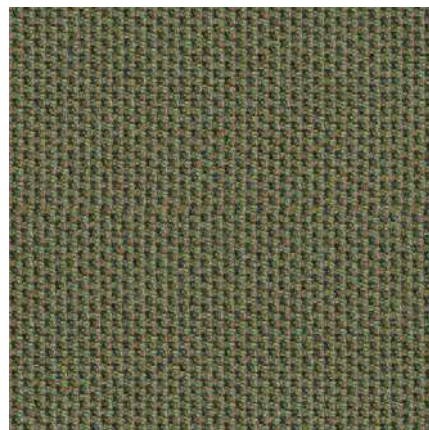
TWIST&SIT | ARQUS



Metal MA05



Cyber GB11



Cyber GB17



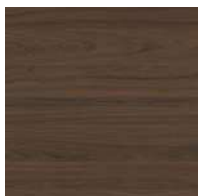
Veneer NC03



TWIST&SIT | NOVA Wood | COMBUS | GIRO



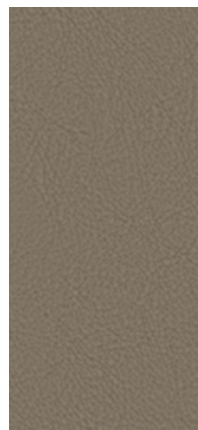
Melamine PA03



Melamine PA10



Valencia C5 DV12



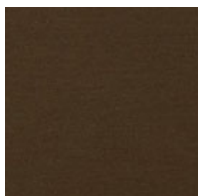
Valencia C5 DV02



Valencia C5 DV06



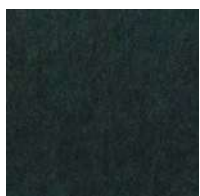
Solid wood NBO2



Metal MA05



ACOUSTIC ARTWORK Wall | PARTHOS | ZooZoo | GIRO | ARCIPELAGO



PET felt BA23



PET felt BA02



PET felt BA02



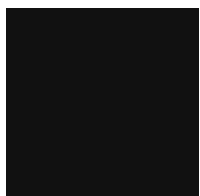
PET felt BA24



Cyber GB17



HPL HA10LA04



HPL HA09LA02



Metal MA05



Berta GA08



Cyber GB11



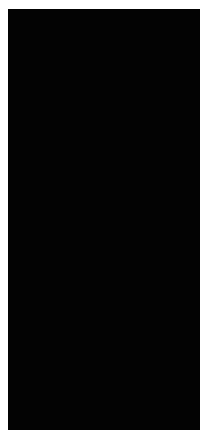
Solid wood NB01



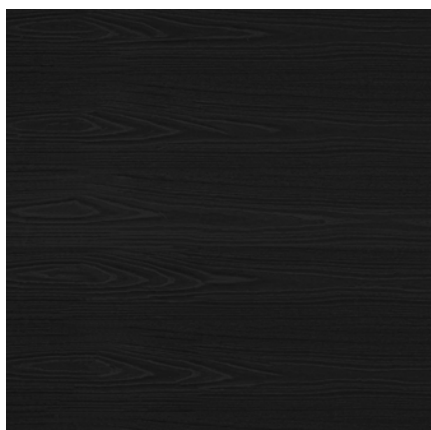
Veneer NC03



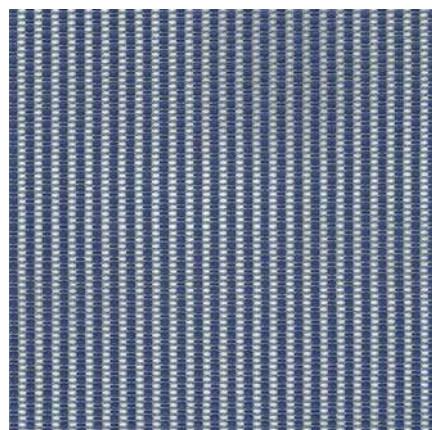
D-CHAIR | ARQUS



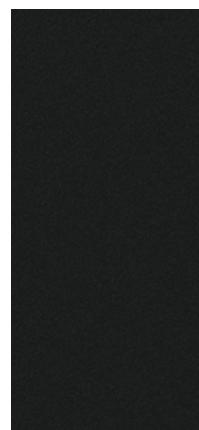
Metal MA01



Veneer NC01



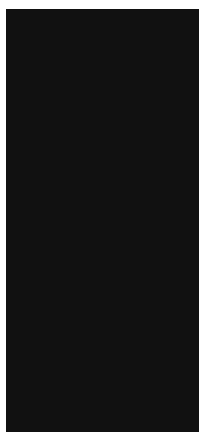
SS mesh FW06



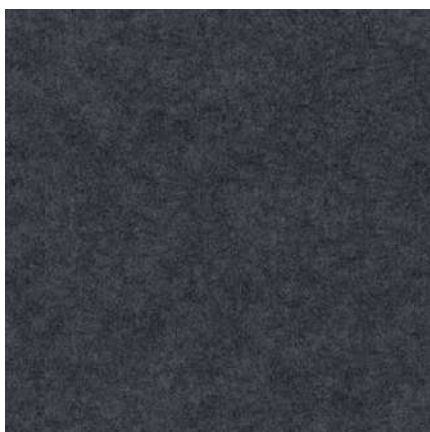
Plastic TA09



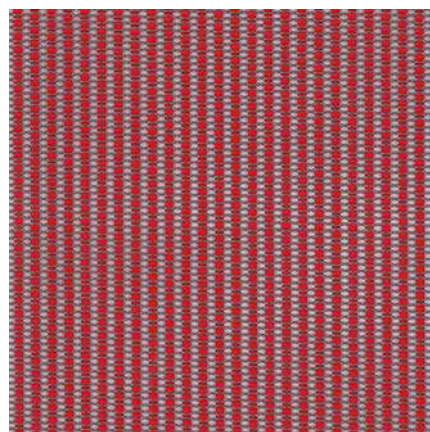
D-CHAIR | PARTHOS | ACOUSTIC ARTWORK Wall



HPL



PET felt



SS mesh



Plastic

HA09

BA08

FW08

TA11