

ASSEMBLY INSTRUCTIONS

WARNING! This unit must be assembled in the order shown. Failure to do so may result in damage to the parts or impede function of the unit.

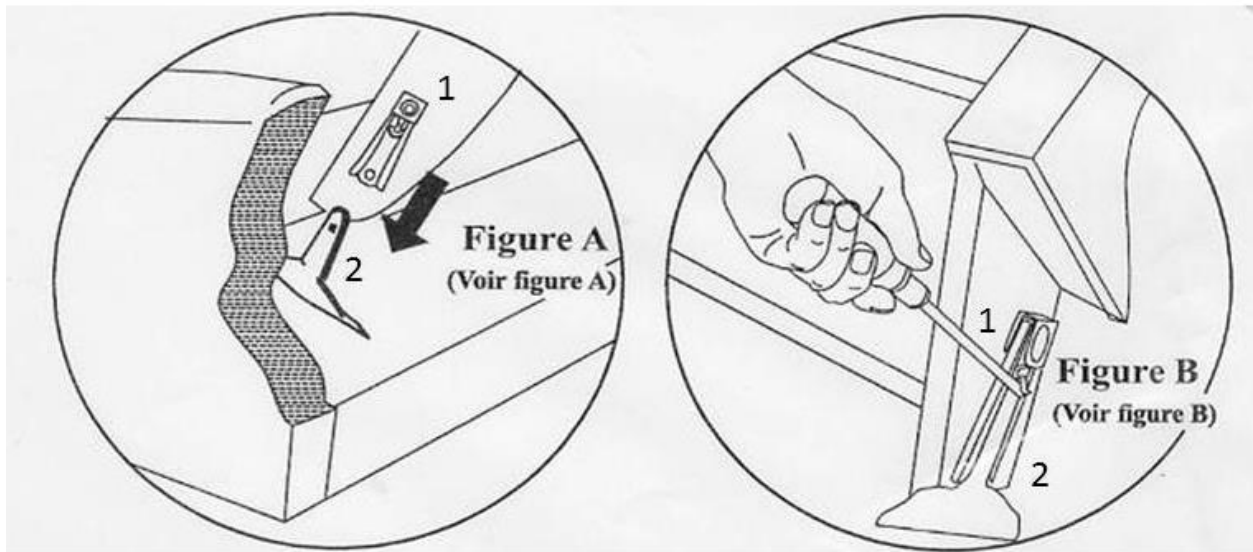
General Instructions

- Read all Assembly Instructions prior to assembling the product
 - Make sure you have all parts before beginning assembly
- To avoid damage, assemble the product on a non-abrasive surface.

STEP 1: To install “easy-off chair back”, slide inside back receivers (1) onto the steel mechanism posts (2) in the base of the furniture (Figure A).

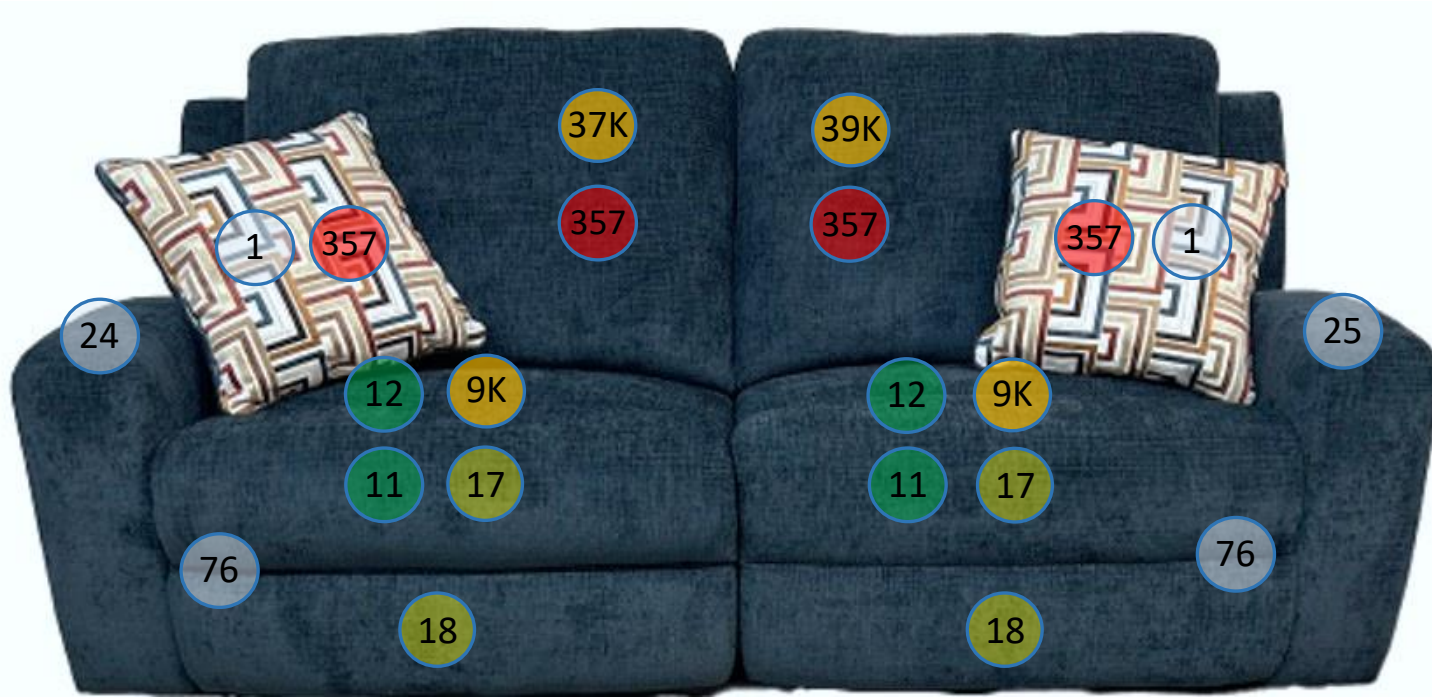
STEP 2: Press both sides seat back from the top downward firmly into place. The inside back automatically locks into place.

STEP 3: To remove the backs, use a screwdriver pulling outward on the black tab in the metal sleeve (Figure B) on both sides of the inside back receivers (1) and lift the back off the base of the furniture.



STEP 4: Pull down velcro seat back flap and align properly to wrap over the bottom of the base frame and attach/secure. Note: If the seat back is not properly seated on the posts, the velcro back flap will not attach easily.

3880681



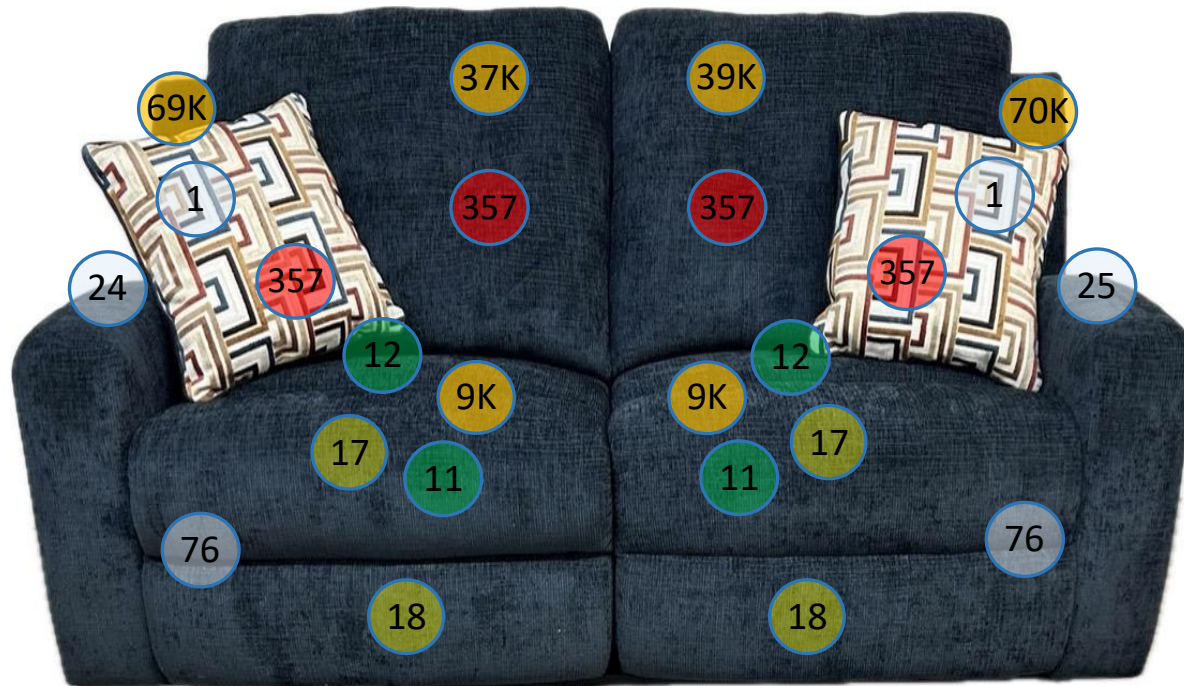
Call out	Description
● (Red)	Blown Fiber
● (Yellow)	Cushion Chaise Pad – Top Pad
● (Green)	Cushion Foam
● (Orange)	KD Component
● (Light Blue)	Cover

For more RPs' information, please see the following page.





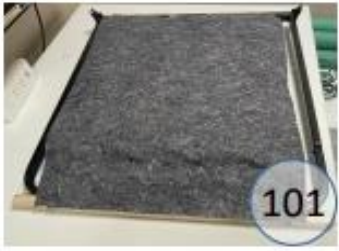
3880686



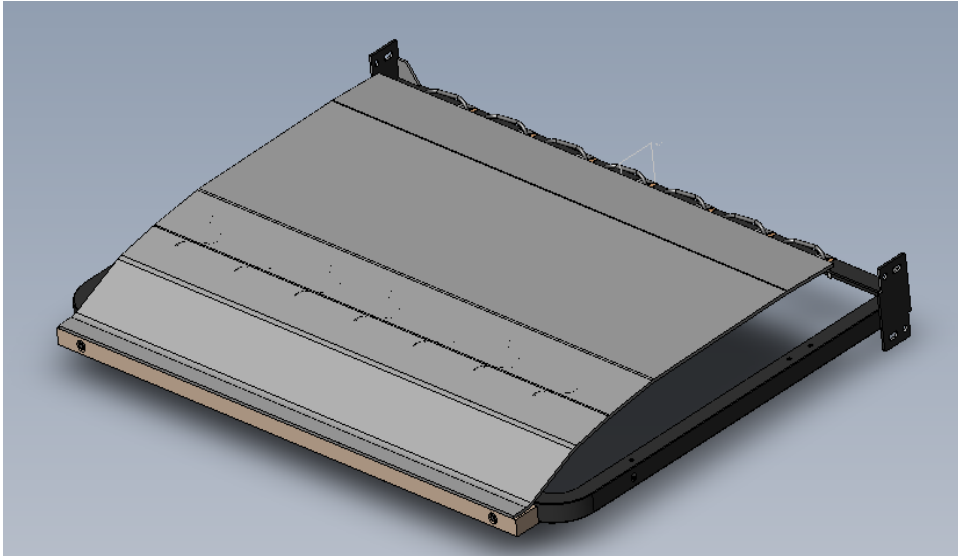
Call out	Description
● (Red)	Blown Fiber
● (Yellow)	Cushion Chaise Pad – Top Pad
● (Green)	Cushion Foam
● (Orange)	KD Component
● (Light Blue)	Cover

For more RPs' information, please see the following page.

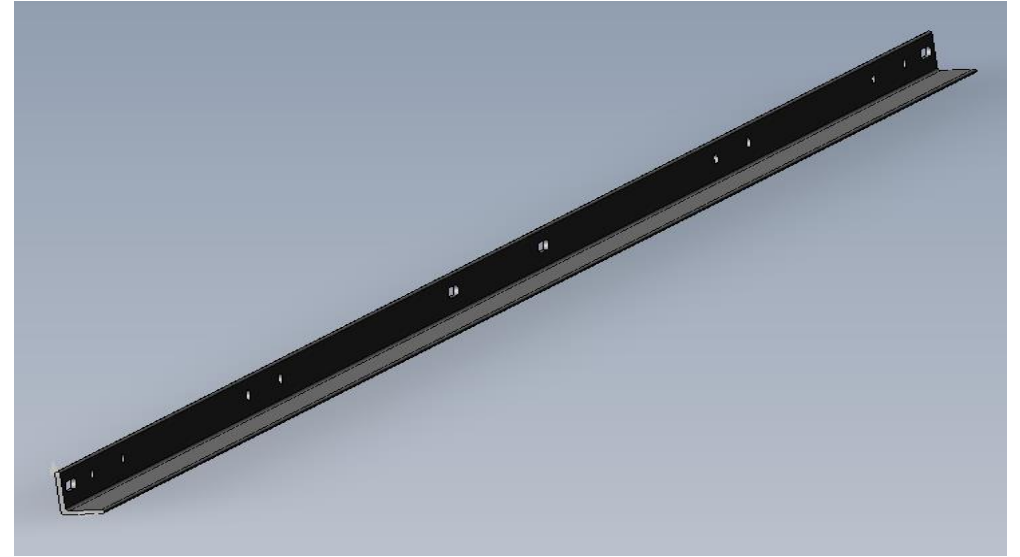




101



105



134

