

SPLIT SCREENS

— By Actiu —



The SPLIT divider allows you to **reconfigure a space in a matter of seconds**, creating streamlined areas that adapt to the needs of each task.

The SPLIT divider can **adapt to contract and hospitality settings** that require private and separate areas within an open space.



ACTIU



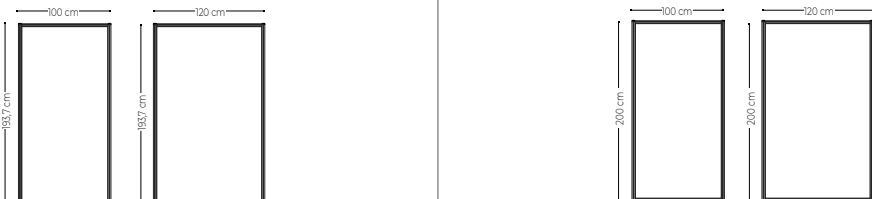
www.actiu.com

Design goes beyond aesthetics: innovation, space and furniture go hand in hand to create environments that are friendlier, more comfortable and more motivating for people: environments that are more dynamic, fresh, creative, ergonomic and functional.

A business philosophy in which design is part of our DNA, as we apply it to every facet of the company: products, architecture, projects, brand, communication, work spaces ...

Lightweight structural panel - SPLIT



Model	Lightweight structural panel - SPLIT	
Technical Features	<ul style="list-style-type: none"> • Profiles of anodized extruded aluminium, in aluminized or white finishes. • Aluminium injection connecting system with aluminized epoxy coating. • Central panel - Complete: <ul style="list-style-type: none"> • MFC Boards - 22 mm thickness. • Clear methacrylate - 5 mm thickness. • 16mm melamine board + 3+3mm upholstered foam • HPL writing board - two faces. • 16mm melamine board + 3+3mm upholstered foam 	
Supports		
	<p style="text-align: center;">Flat Foot</p> <p>Steel foot with two coats of paint. White and aluminium finish. Each module includes 2 as standard.</p>	<p style="text-align: center;">Foot with castors</p> <p>Steel foot with two coats of paint. White and aluminium finish. Each module includes 2 as standard with 2 wheels of Ø65 mm.</p>
Dimensions	<p style="text-align: center;">Fixed Model - Height 195 cm Mobile Model - Height 200 cm</p>	
	<p style="text-align: center;">Total dimensions: Height: 1937 mm Width: 1000 / 1200 mm Thickness: 41 mm</p>	
		

PROFILE



PANEL

Complete Panel



Map of Uses



SPLIT Screens

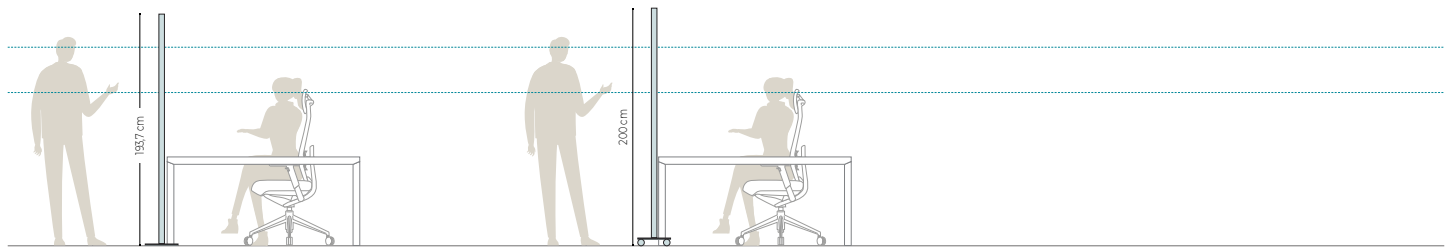
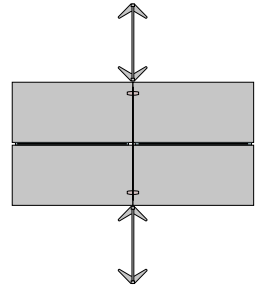
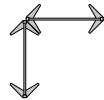
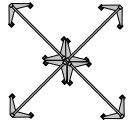
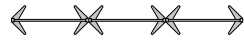


Table h: 74 cm

Map of Uses



Weight and Volume // Ecodesign

Protective panels - SPLIT								
MODEL	Units/ Pack	Weight	Volume	Materials Recycled materials	Production Aluminium, steel and wood	Transport Package and thinner free	Use To clean and maintain	Disposal Recyclable materials
	2	MFC 21		High	100%	100%	Easy	High
		HPL 23						
		Upholstered 23						
		Methacrylate 24						
	2	MFC 23		High	100%	100%	Easy	High
		HPL 25						
		Upholstered 25						
		Methacrylate 27						
	2	MFC 21,5		High	100%	100%	Easy	High
		HPL 23,5						
		Upholstered 23,5						
		Methacrylate 24,5						
	2	MFC 23,5		High	100%	100%	Easy	High
		HPL 25,5						
		Upholstered 25,5						
		Methacrylate 27,5						

Materials: Maximum use of materials to eliminate and minimize scraps. Use of recyclable and recycled materials in those components that do not affect the functionality and durability.

Production: Maximum optimization of energy use. Minimal environmental impact. Last generation technological systems. Zero discharge of wastewater. No VOC coatings. Processes free of heavy metals, phosphates, OC and COD.

Transport: Detachable systems. Volumes that facilitate the optimization of space. Maximum reduction of energy consumption by transport.

Use: Quality and warranty. Long lasting. Replacements available.

Disposal: Waste reduction. Supplier-manufacturer packaging reuse system. Components are easy to be separated. Inks in packaging are water-based, without solvents.

Standards

SLPIT has passed tests done in our technical department as well as the tests done in AIDIMA the Technological Institute for furniture. The tests correspond to:

Standard	Description
UNE: EN 1023-1:96	Office furniture. Screens. Part 1: Dimensions.
UNE: EN 1023-2:96	Office furniture. Screens. Part 2: Mechanical safety requirements
UNE: EN 1023-3:96	Office furniture. Screens. Part 3: Test methods

Certificates

The different programmes get points in different environmental categories to get the LEED certificate or WELL certificate (sustainability, material and resources, water, energy and atmosphere, inner environment quality, innovation and design).

