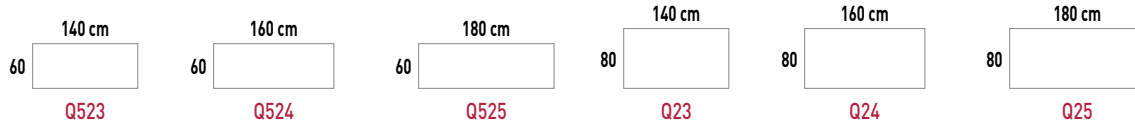


# PLEK

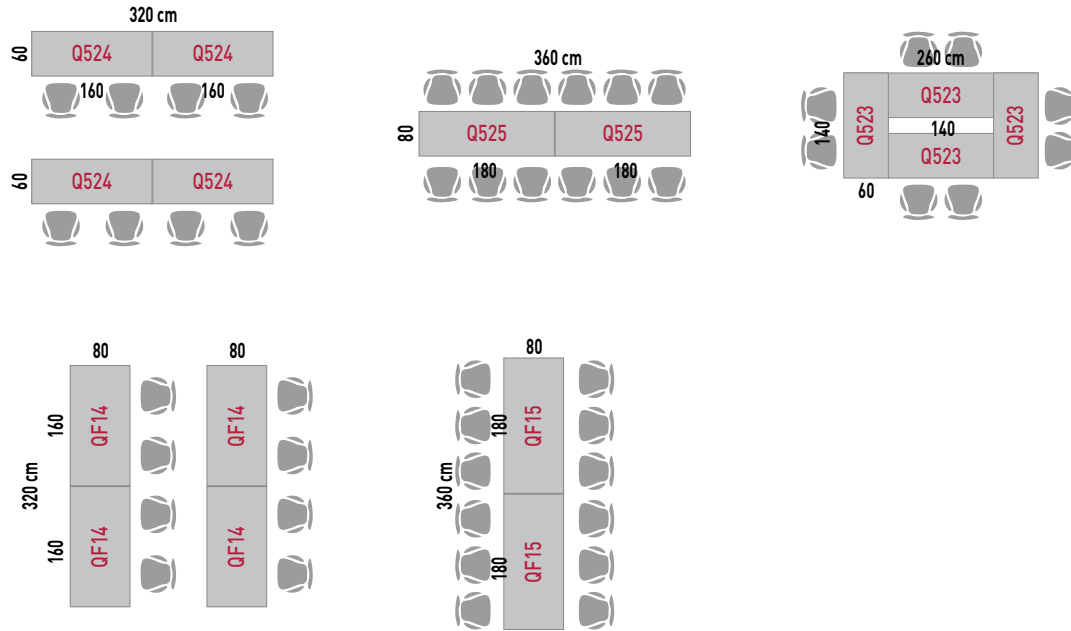
—By Alegre Design—



FOLDING TABLES WITH FRAME



SAMPLE LAYOUTS - PLEK



# Folding tables with frame



## DESCRIPTION

- 1 Steel frame 40x15 mm and 2 mm thick
- 2 19 mm board with anti-shock soft edge
- 3 Rectangular edge 2 mm thick and anti-shock soft edge 3 mm thick
- 4 Extruded aluminium runner with polypropylene (PP.) bracket
- 5 Moulded aluminium legs 21mm
- 6 Black polypropylene (P.P) caps



## FRAME

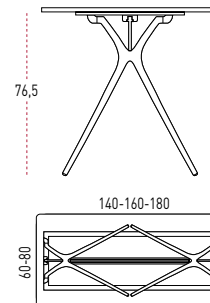


Finishes: black, white, silver and polished



Marco de acero de 40x15 mm con 2 mm de grosor

## SIZES



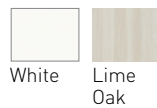
## TROLLEY FOR STACKING



Max.7 tables

## TOP FINISHES

MFC (19 mm)

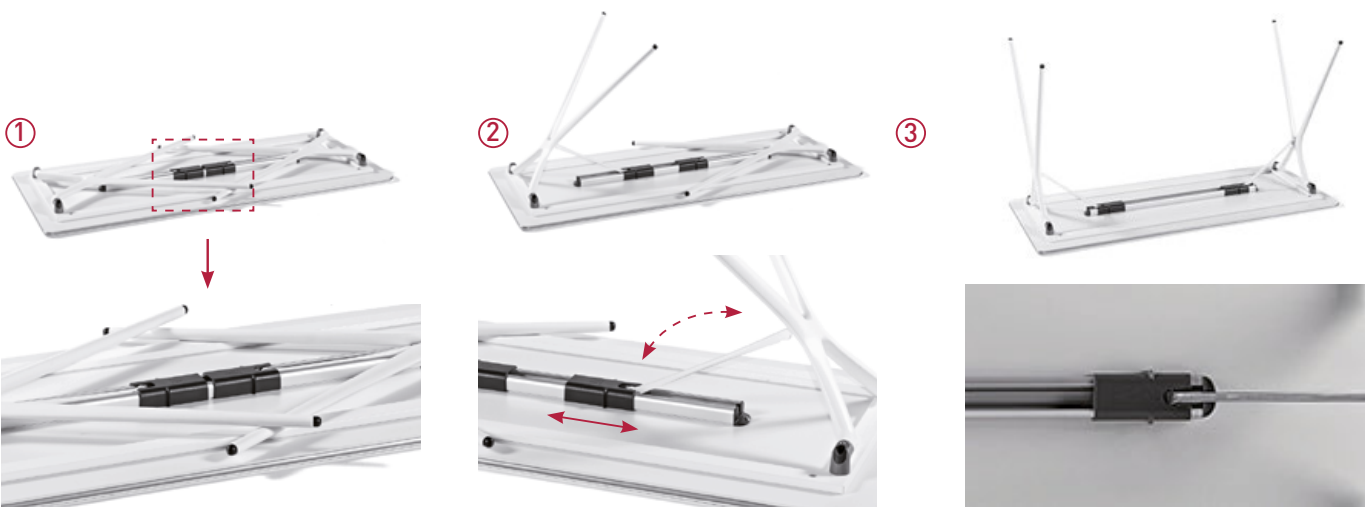


(see finishes and fabric card)

## FOLDING SYSTEM

Folding system has an articulated movement with the support of a sliding beam. Mechanism of Enclose and Blocked, is patented by ACTIU.

**NOTE:** Following images show PLEK desks without frame. Desks with frame(for intensive use) have the same folding mechanism.



Folded leg details

Sliding movement detail

Detail of mechanism of Enclose and Blocked, patented by ACTIU

## Fixed tables without frame



### DESCRIPTION

- 1 Supports
- 2 Top: glass finish
- 3 Black polypropylene (P.P) caps
- 4 Moulded aluminium legs 21mm
- 5 Extruded aluminium beam

### LEGS



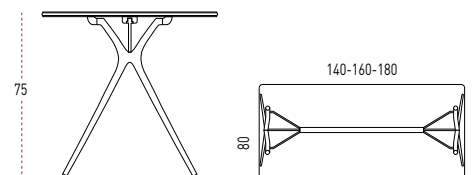
Finishes: black, white, silver and polished

### SUPPORTS FIXED TO DESKS



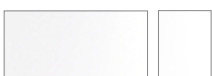
fixed system detail

### SIZES



### TOP FINISHES

Glass (5+5 mm)



Clear

White

(see finishes and fabric card)



**MATERIALS**

Maximum use of materials to eliminate and minimize scraps. Use of recyclable and recycled materials in those components that do not affect the functionality and durability.

**84,44%**  
RECYCLED  
MATERIALS



**PRODUCTION**

Maximum optimization of energy use. Minimal environmental impact. Last generation technological systems. Zero discharge of wastewater. No VOC coatings. Processes free of heavy metals, phosphates, OC and COD.

**100%**  
RECYCLABLE  
ALUMINIUM, STEEL  
& WOOD



**TRANSPORT**

Detachable systems. Volumes that facilitate the optimization of space. Maximum reduction of energy consumption by transport.

**100%**  
RECYCLABLE  
PACKAGE AND THINNER  
FREE



**USE**

Quality and warranty. Long lasting. Replacements available.

**EASY**  
TO CLEAN  
AND MAINTAIN



**DISPOSAL**

Waste reduction. Supplier-manufacturer packaging reuse system. Components are easy to be separated. Inks in packaging are water-based, without solvents.

**94,95%**  
RECYCLABLE  
MATERIALS

■ **CERTIFICATES AND REFERENCES**

The different programmes get points in different environmental categories to get the LEED certificate (sustainability, material and resources, water, energy and atmosphere, inner environment quality, innovation and design).



The mark of responsible forestry



EN ISO 14006:2011  
ECODESIGN Certificate



UNE-EN ISO 9001:2008  
ISO 9001 Certificate



UNE-EN ISO 14001:2004  
ISO 14001 Certificate



E1 Certificate  
by EN 13986



California 93120  
Compliant Formaldehyde Phase 2



ACTIU TECHNOLOGY PARK  
LEED® PLATINUM certified by USGBC  
Leadership in Energy & Environmental Design  
LEED® Gold certified 2011 - LEED® Platinum certified 2017